

WAAS CH 82623 W06A	APP CRS 061°	Rwy Idg 6401 TDZE 1152 Apt Elev 1190
--	------------------------	---

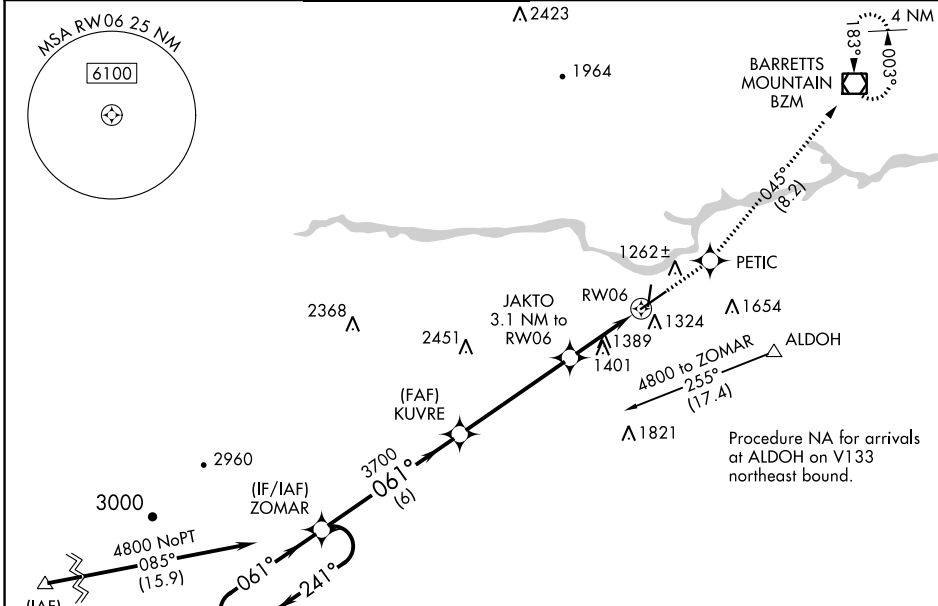
RNAV (GPS) RWY 6

HICKORY RGNL (HKY)

⚠ DME/DME RNP-0.3 NA. When local altimeter setting not received, use Morganton altimeter setting and increase all MDA 40 feet; increase LNAV and LP Cat C/D and Circling Cat C visibility 1/8 mile. When VGSI inop, Straight-in/Circling Rwy 6 procedure NA at night. When VGSI inop, Circling Rwy 1 and 19 NA at night. Rwy 1, 6, 19 helicopter visibility reduction below 1 SM NA.

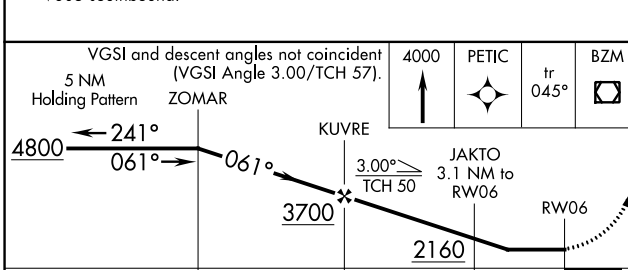
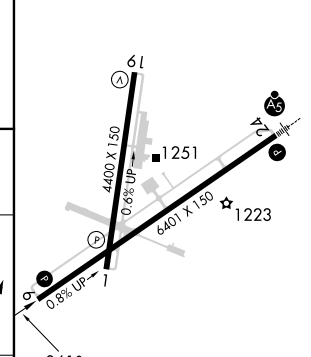
MISSED APPROACH: Climb to 4000 direct PETIC and on track 045° to BZM VOR/DME and hold.

ASOS 118.325	ATLANTA CENTER 125.15 263.0	HICKORY TOWER ★ 128.15 (CTAF) 0	GND CON 121.7	CLNC DEL 121.7	CLNC DEL 124.25 (When twr closed)
------------------------	---------------------------------------	---	-------------------------	--------------------------	--



Procedure NA for arrivals at GENOD on V20-222 southwest bound and V605 southbound.

ELEV 1190	TDZE 1152
-----------	-----------



CATEGORY	A	B	C	D	
LP MDA	1560-1	408 (400-1)	1560-1¼	408 (400-1¼)	HIRL Rwy 6-24 0
LNAV MDA	1740-1	588 (600-1)	1740-1¾	588 (600-1¾)	REIL Rwy 1-19 0
CIRCLING	1740-1	550 (600-1)	1740-1¾	1740-2	REIL Rwy 1 0
			550 (600-1¾)	550 (600-2)	REIL Rws 6 and 19

SE-2, 15 JUL 2021 to 12 AUG 2021

SE-2, 15 JUL 2021 to 12 AUG 2021