


VOR/DME BZM <b>110.8</b> Chan <b>45</b>	APP CRS <b>229°</b>	Rwy Idg TDZE <b>1190</b> Apt Elev <b>1190</b>	<b>6401</b>
---	------------------------	---	-------------

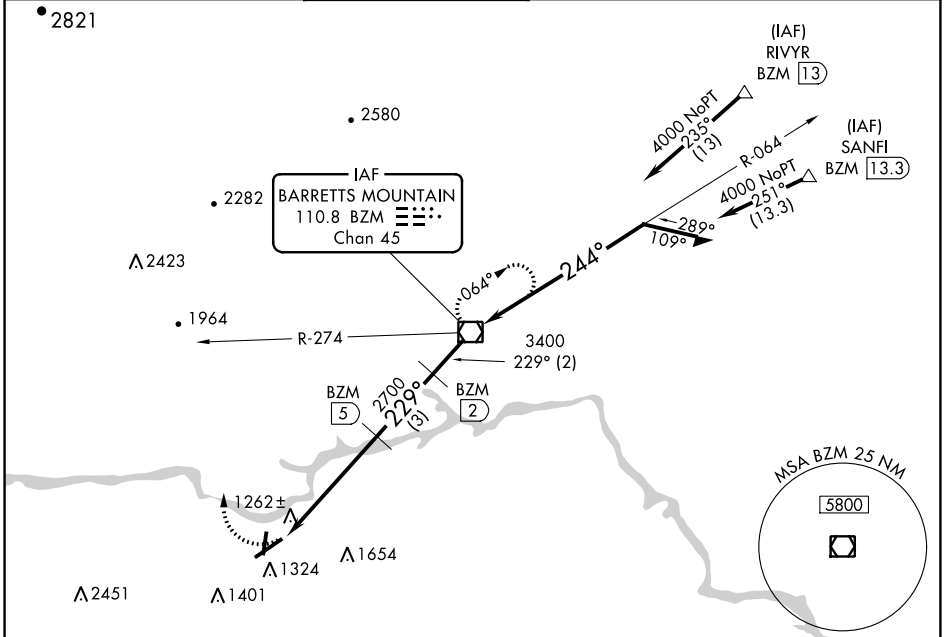
# VOR/DME RWY 24

HICKORY RGNL (HKY)

**▼** Inop table does not apply. Night landing: Rwy 1/6/19 NA. When local altimeter setting not received, use Morganton altimeter setting and increase all MDA 40 feet and increase S-24 Cat D visibility ¼ mile.

**MALSR**  MISSED APPROACH: Climbing right turn to 4000 via heading 340° and BZM R-274 to BZM VOR/DME and hold.

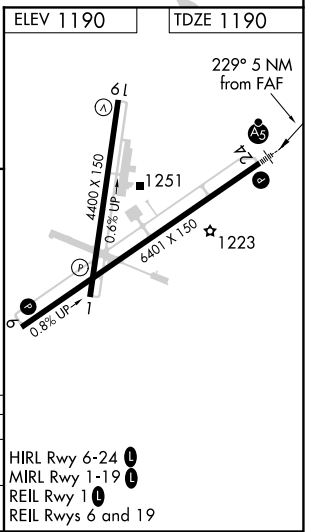
ASOS <b>118.325</b>	ATLANTA CENTER <b>125.15 263.0</b>	HICKORY TOWER ★ <b>128.15 (CTAF) 0</b>	GND CON <b>121.7</b>	CLNC DEL <b>121.7</b>	CLNC DEL <b>124.25</b> (When twr closed)
------------------------	---------------------------------------	---	-------------------------	--------------------------	--



SE-2, 15 JUL 2021 to 12 AUG 2021




SE-2, 15 JUL 2021 to 12 AUG 2021

ELEV 1190	TDZE 1190
-----------	-----------



4000	BZM R-274	BZM	BZM VOR/DME	Remain within 10 NM
hdg 340°				
	BZM 10	BZM 5	BZM 2	
	2700	3400	4000	
	5 NM	3 NM	2 NM	

CATEGORY	A	B	C	D
S-24	1600-1	410 (500-1)	1600-1¼	410 (500-1¼)
CIRCLING	1640-1	450 (500-1)	1640-1½	1740-2 550 (600-2)

HIRL Rwy 6-24   
 MIRL Rwy 1-19   
 REIL Rwy 1   
 REIL Rws 6 and 19