

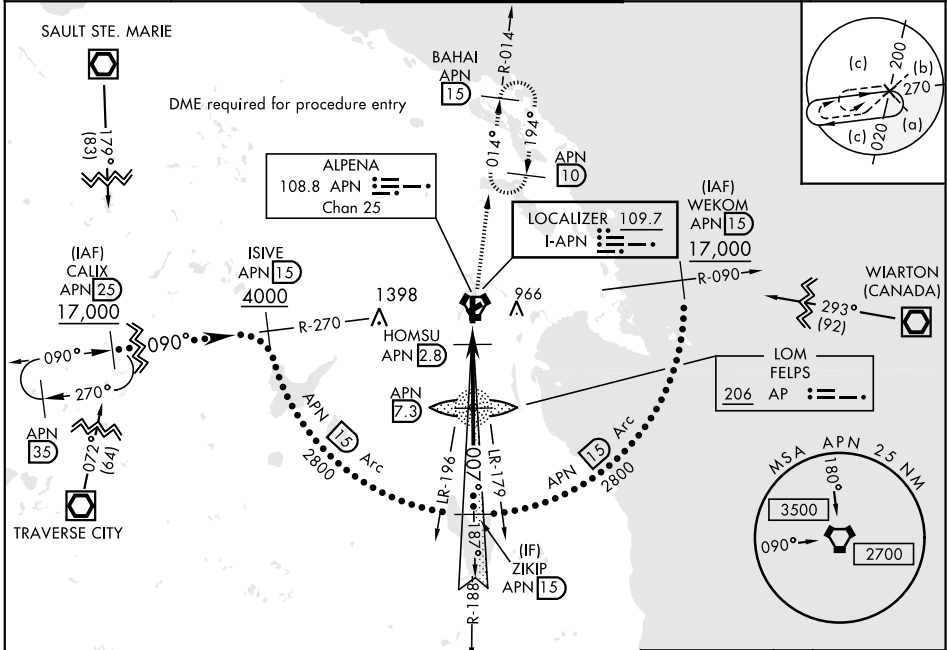
# HI-ILS or LOC RWY 1

LOC I-APN <b>109.7</b>	APCH CRS <b>007°</b>	Rwy Ldg TDZE <b>9001</b> <b>685</b> Arprt Elev <b>690</b>	JAL-718 [USAF]	ALPENA COUNTY RGNL (KAPN)
---------------------------	-------------------------	---	----------------	---------------------------

\* When ALS inop, increase vis to ¾ mile.  
 \*\* When ALS inop, increase vis to 1 ½ miles.
 


 MISSED APPROACH: Climb to 1300, then climbing right turn to 5000 on APN VORTAC R-014 to BAHAI/15 DME and hold. Continue climb-in-hold to 5000.

ASOS <b>120.675</b>	ALPENA APP CON <b>128.425 379.3</b>	ALPENA TOWER ★ <b>121.35 (CTAF) 0 318.1</b>	GND CON <b>121.9 275.8</b>	UNICOM <b>122.95</b>
------------------------	--	--	-------------------------------	-------------------------



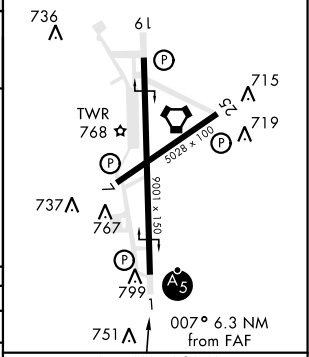
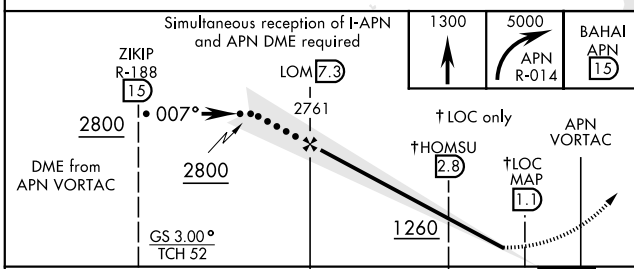
EC-1, 15 JUL 2021 to 12 AUG 2021

EC-1, 15 JUL 2021 to 12 AUG 2021

## DME REQUIRED

EMERG SAFE ALT 100 NM 4000

ELEV 690	TDZE 685
HIRL Rwy 1-19	MIRL Rwy 7-25
REIL Rwy 7-25, 19	



CATEGORY	C	D	E
S-ILS 1*	885-½	200	(200-½)
S-LOC 1**	1140-7/8	455	(500-7/8)
CIRCLING	1220-1½	1280-2	1320-2¼
	530 (600-1½)	590 (600-2)	630 (700-2¼)

FAF to MAP 6.3 NM					
Knots	120	140	160	180	200
Min:Sec	3:09	2:42	2:22	2:06	1:53

# HI-ILS or LOC RWY 1