

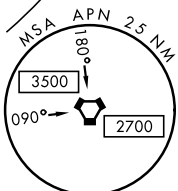
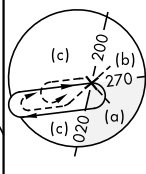
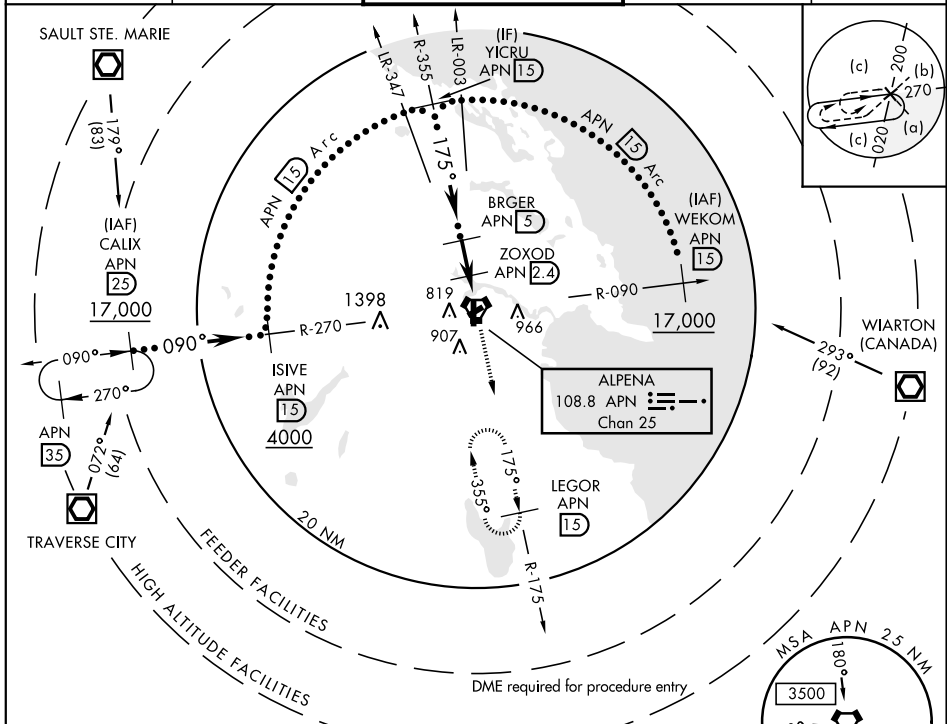
ALPENA, MICHIGAN

HI-TACAN RWY 19

VORTAC APN 108.8 Chan 25	APCH CRS 175°	Rwy ldg 9001 TDZE 683 Arprt Elev 690	JAL-718 [USAF]	ALPENA COUNTY RGNL (KAPN)
--	-------------------------	---	----------------	---------------------------

MISSED APPROACH: Climb to 5000 on APN R-175 to LEGOR (1.5 DME) and hold, continue climb in holds to 5000.

ASOS 120.675	ALPENA APP CON 128.425 379.3	ALPENA TOWER ★ 121.35 (CTAF) 0 318.1	GND CON 121.9 275.8	UNICOM 122.95
------------------------	--	--	-------------------------------	-------------------------



DME REQUIRED

EMERG SAFE ALT 100 NM 4000

YICRU R-355 (1.5) 2800	VGSIs and descent angles not coincident (VGSi Angle 3.00/TCH 39)		5000	LEGOR APN (1.5)	ELEV 690	TDZE 683
			APN R-175			
CATEGORY	C	D	E			
S-19	1140-1 3/8	457 (500-1 3/8)				
CIRCLING	1220-1 1/2 530 (600-1 1/2)	1280-2 590 (600-2)	1320-2 1/4 630 (700-2 1/4)			

ALPENA, MICHIGAN
Amdt 5C 13AUG20

45°05'N-83°34'W

ALPENA COUNTY RGNL (KAPN)

HI-TACAN RWY 19

EC-1, 15 JUL 2021 to 12 AUG 2021

EC-1, 15 JUL 2021 to 12 AUG 2021