

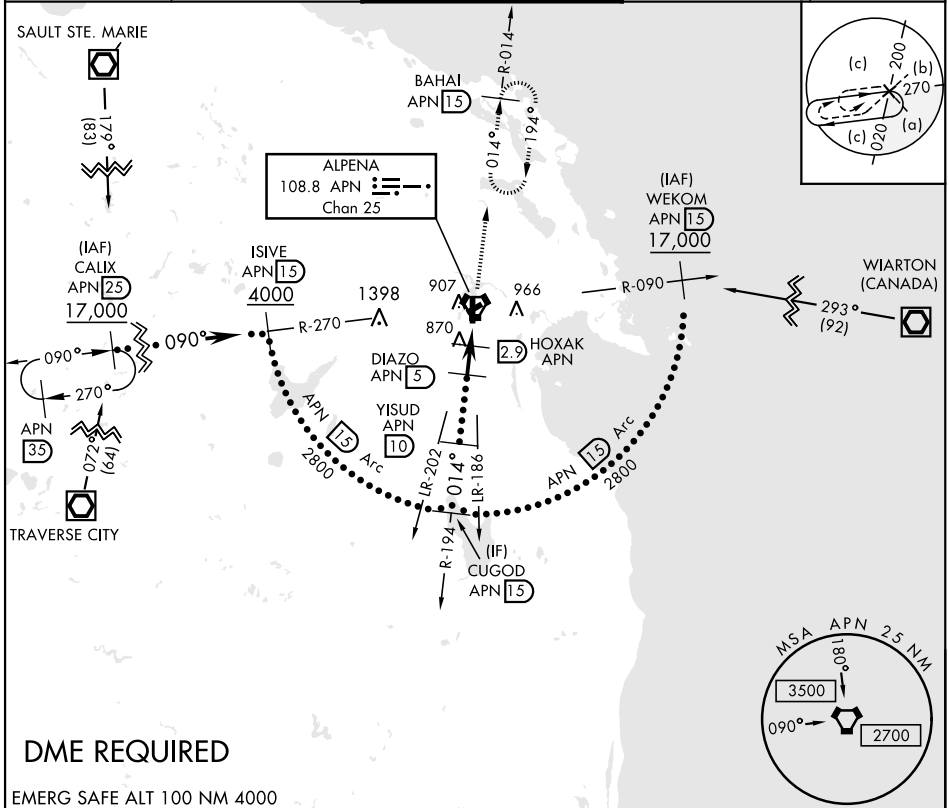
ALPENA, MICHIGAN

HI-VOR or TACAN RWY 1

VORTAC APN 108.8 Chan 25	APCH CRS 014°	Rwy Idg TDZE Arprt Elev 9001 685 690	JAL-718 [USAF]	ALPENA COUNTY RGNL (KAPN)
--	-------------------------	--	----------------	---------------------------

M * When ALS inop, increase vis to 1%. **MALSR** MISSED APPROACH: Climb to 5000 on APN R-014 to BAHAI 15 DME and hold, continue climb in hold to 5000.

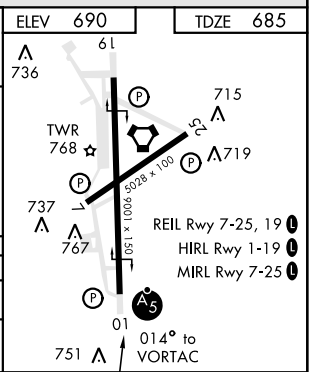
ASOS 120.675	ALPENA APP CON 128.425 379.3	ALPENA TOWER ★ 121.35 (CTAF) 0 318.1	GND CON 121.9 275.8	UNICOM 122.95
------------------------	--	---	-------------------------------	-------------------------



DME REQUIRED

EMERG SAFE ALT 100 NM 4000

	CUGOD R-194 2800	YISUD 10 2800	DIAZO 5 2000	HOXAK 2.9 1340	WUDIM 1.6 1340	VORTAC 5000 APN R-014	BAHAI APN 15 ELEV 690 TDZE 685
	3.14° TCH 52		014°		014°		
	2.1 NM		1.3 NM		5 NM		
CATEGORY	C		D		E		
S-1 *	1140-7/8		455 (500-7/8)				
CIRCLING	1220-1 1/2 530 (600-1 1/2)		1280-2 590 (600-2)		1320-2 1/4 630 (700-2 1/4)		



ALPENA, MICHIGAN
Amdt 1C 13AUG20

45° 05' N-83° 34' W

ALPENA COUNTY RGNL (KAPN)

HI-VOR or TACAN RWY 1

EC-1, 15 JUL 2021 to 12 AUG 2021

EC-1, 15 JUL 2021 to 12 AUG 2021