

WAAS CH 50310 W01A	APP CRS 007°	Rwy Idg TDZE Apt Elev	9001 685 690
--	------------------------	-----------------------------	---


RNAV (GPS) RWY 1

ALPENA COUNTY RGNL (APN)

RNP APCH.

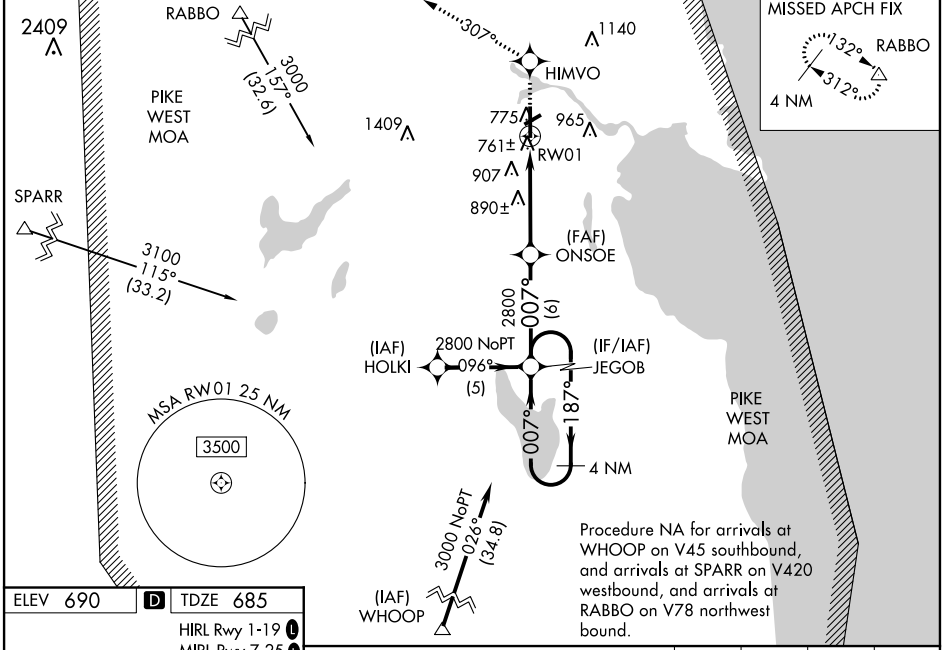
⚠ For uncompensated Baro-VNAV systems, LNAV/VNAV NA below -16°C or above 48°C. When local altimeter setting not received, use Rogers City altimeter setting; increase all LPV DAs to 1029 feet, LNAV/VNAV DAs to 1084 feet and all MDAs to 60 feet; increase LPV all Cats, LNAV/VNAV all Cats and LNAV Cats C and D visibility ¼ SM. Baro-VNAV and VDP NA when using Roger City altimeter setting. For inop ALS, increase LPV all Cats visibility to 1 SM.

MALSR

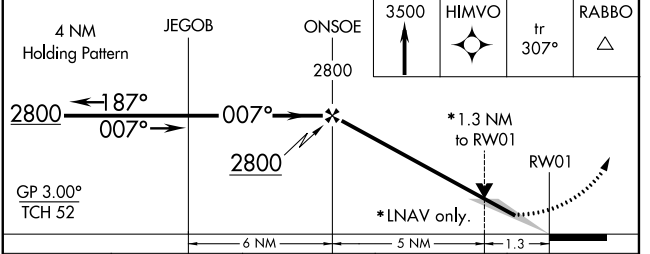
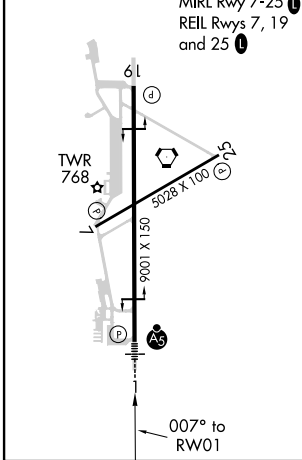


MISSED APPROACH:
Climb to 3500 direct HIMVO and on track 307° to RABBO and hold.

ASOS 120.675	ALPENA APP CON ★ 128.425 379.3	ALPENA TOWER ★ 121.35 (CTAF) 318.1	GND CON 121.9 275.8	UNICOM 122.95
------------------------	--	--	-------------------------------	-------------------------



ELEV 690	D TDZE 685
----------	-------------------



CATEGORY	A	B	C	D
LPV DA		974-½	289 (300-½)	
LNAV/VNAV DA		1029-¾	344 (400-¾)	
LNAV MDA	1160-½	475 (500-½)	1160-¾ 475 (500-¾)	1160-1 475 (500-1)
C CIRCLING	1160-1	470 (500-1)	1220-1½ 530 (600-1½)	1280-2 590 (600-2)

EC-1, 15 JUL 2021 to 12 AUG 2021

EC-1, 15 JUL 2021 to 12 AUG 2021