

(BEECH5.BEECH) 18088

AL-744 (FAA)

FORT LAUDERDALE/HOLLYWOOD INTL (FLL)

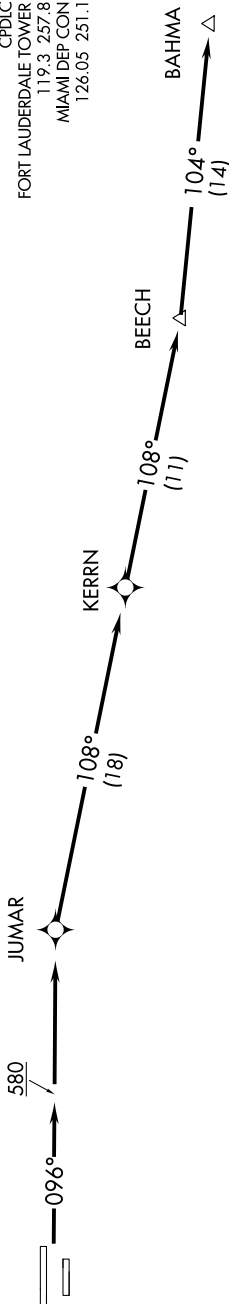
BEECH FIVE DEPARTURE (RNAV)

FORT LAUDERDALE, FLORIDA

SE-3, 15 JUL 2021 to 12 AUG 2021

**TOP ALTITUDE:
3000**

D-ATIS 135.0
CLINC DEL
128.4
GND CON
121.4
CPDIC
FORT LAUDERDALE TOWER
119.3 257.8
MIAMI DEP CON
126.05 251.1



TAKEOFF MINIMUMS

Rwys 10L/R: Standard with minimum climb of 500' per NM to 580.
Rwys 28L/R: NA - ATC.

- NOTE: RADAR required.
- NOTE: DME/DME IRU or GPS required.
- NOTE: RNAV 1.
- NOTE: Turbojet only.
- NOTE: FLL east operations only.
- NOTE: Accelerate to 250K within 7 NM of departure, if unable advise ATC.

NOTE: Chart not to scale.

DEPARTURE ROUTE DESCRIPTION

TAKEOFF RWYS 10L/R: Climb heading 096° to 580, then direct JUMAR, then direct JUMAR, then on depicted route to BAHMA, thence. . . .
. . . .maintain 3000 or as assigned by ATC. Expect clearance to filed altitude 10 minutes after departure.

SE-3, 15 JUL 2021 to 12 AUG 2021

BEECH FIVE DEPARTURE (RNAV)

(BEECH5.BEECH) 25JUN15

FORT LAUDERDALE, FLORIDA

FORT LAUDERDALE/HOLLYWOOD INTL (FLL)