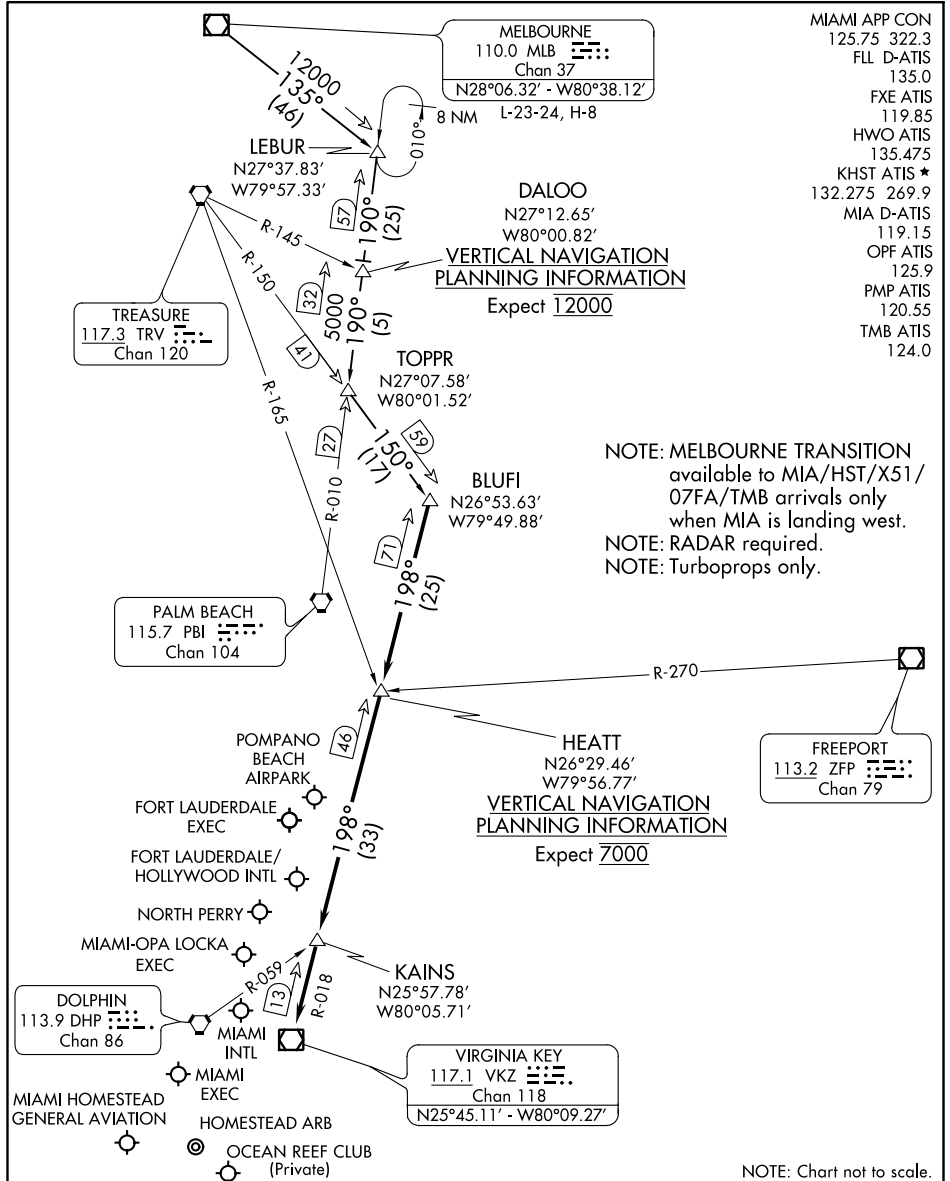


BLUF1 FOUR ARRIVAL

FORT LAUDERDALE, FLORIDA



- MIAMI APP CON 125.75 322.3
- FLL D-ATIS 135.0
- FXE ATIS 119.85
- HWO ATIS 135.475
- KHST ATIS ★ 132.275 269.9
- MIA D-ATIS 119.15
- OPF ATIS 125.9
- PMP ATIS 120.55
- TMB ATIS 124.0

SE-3, 15 JUL 2021 to 12 AUG 2021

SE-3, 15 JUL 2021 to 12 AUG 2021

MELBOURNE TRANSITION (MLB.BLUF14): From over MLB VOR/DME on MLB R-135 to LEBUR INT/MLB 46 DME, then on PBI R-010 to TOPPR INT/PBI 30 DME, then on TRV R-150 to BLUFI INT. Thence . . .
 . . . from over BLUFI INT/VKZ 71 DME on VKZ R-018 to HEATT INT/VKZ 46 DME, then on VKZ R-018 to KAINS INT, then on VKZ R-018 to VKZ VOR/DME. Expect RADAR vectors to final approach course after KAINS INT.

BLUF1 FOUR ARRIVAL

(BLUF1.BLUF14) 22JUN17

FORT LAUDERDALE, FLORIDA

NOTE: Chart not to scale.