

# FISEL SEVEN ARRIVAL (RNAV)

FORT LAUDERDALE, FLORIDA

MIAMI APP CON  
 133.775 285.6  
 FLL D-ATIS  
 135.0  
 FXE ATIS  
 119.85  
 HWO ATIS  
 135.475  
 OPF ATIS  
 125.9  
 PMP ATIS  
 120.55

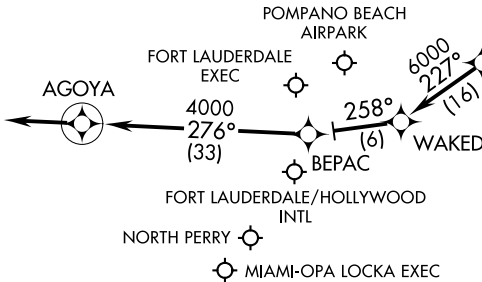
NOTE: RADAR required.  
 NOTE: RNAV 1.  
 NOTE: DME/DME/IRU or GPS required.  
 NOTE: Turbojet aircraft only.

NOTE: Treasure transition: ATC assigned only.

## ARRIVAL ROUTE DESCRIPTION

- CRANS TRANSITION (CRANS.FISEL7)
- FREEPORT TRANSITION (ZFP.FISEL7)
- MELBOURNE TRANSITION (MLB.FISEL7)
- ORMOND BEACH TRANSITION (OMN.FISEL7)
- TREASURE TRANSITION (TRV.FISEL7)

From FISEL on track 227° to WAKED, then on track 258° to BEPAC, then on track 276° to AGOYA, then on 276° heading or as assigned by ATC. Expect RADAR vectors.



- NOTE: Landing FXE, HWO, OPF, PMP: Expect RADAR vectors prior to WAKED.
- NOTE: FLL Landing West: Expect RADAR vectors to final approach course after FISEL.
- NOTE: FLL Landing East: Expect RADAR vectors to final approach course prior to AGOYA.

NOTE: Chart not to scale.

# FISEL SEVEN ARRIVAL (RNAV)

FORT LAUDERDALE, FLORIDA