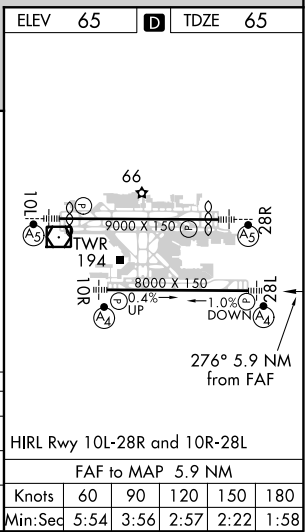
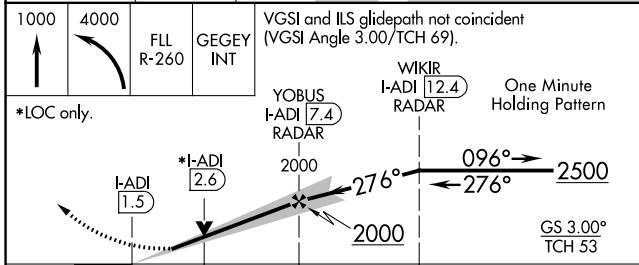
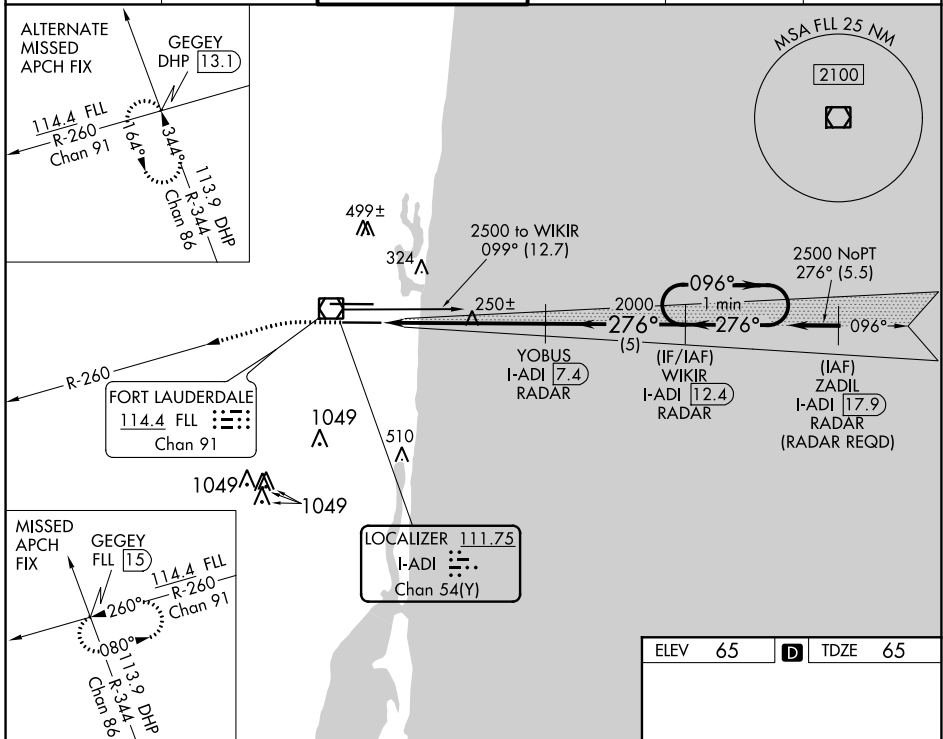


LOC/DME I-ADI <b>111.75</b> Chan <b>54(Y)</b>	APP CRS <b>276°</b>	Rwy Idg TDZE Apt Elev <b>8000</b> <b>65</b> <b>65</b>
---	------------------------	--

# ILS or LOC RWY 28L

FORT LAUDERDALE/HOLLYWOOD INTL (FLL)

<b>▽</b> <b>▲</b>	DME or RADAR Required. Simultaneous approach authorized. Inop table does not apply to S-ILS 28L. For inop ALS, increase S-LOC 28L Cat D visibility to 1 1/4 SM.	MALSF 	MISSED APPROACH: Climb to 1000 then climbing left turn to 4000 on FLL VOR/DME R-260 to GEGEY INT/FLL 1.5 DME and hold, continue climb-in-hold to 4000.		
D-ATIS <b>135.0</b>	MIAMI APP CON <b>133.775 285.6</b>	<b>FORT LAUDERDALE TOWER</b> <b>119.3 257.8</b>	GND CON <b>121.4</b>	CLNC DEL <b>128.4</b>	CPDLC



CATEGORY	A	B	C	D
S-ILS 28L		265/40	200 (200-3/4)	
S-LOC 28L	500/40	435 (500-3/4)	500/50	435 (500-1)
<b>C</b> CIRCLING	680-1	615 (700-1)	800-2 735 (800-2)	800-2 1/4 735 (800-2 1/4)

SE-3, 15 JUL 2021 to 12 AUG 2021

SE-3, 15 JUL 2021 to 12 AUG 2021