

JINGL SIX ARRIVAL (RNAV)

FORT LAUDERDALE, FLORIDA

MIAMI APP CON
 133.775 285.6
 FLL D-ATIS
 135.0
 FXE ATIS
 119.85
 HWO ATIS
 135.475
 OPF ATIS
 125.9
 PMP ATIS
 120.55

ARRIVAL ROUTE DESCRIPTION

BAGGS TRANSITION (BAGGS.JINGL6)

BALKE TRANSITION (BALKE.JINGL6)

LANDING ALL AIRPORTS: From RXXAN on track 131° to FORTL, then on track 126° to SWAGS, then on track 127° to JINGL, then on track 100° to JAREM, then on track 090° to BEPAC, then on heading 093° or as assigned by ATC. Expect RADAR vectors to final approach course.

LOST COMMUNICATIONS:

FLL LANDING EAST: Continue track to JAREM, then proceed direct to HOLID, intercept Rwy 10L final approach course and conduct approach.

FLL LANDING WEST: Continue track to BEPAC, then proceed direct to CEDLU, turn right to intercept Rwy 28R final approach course and conduct approach.

NOTE:RADAR required.

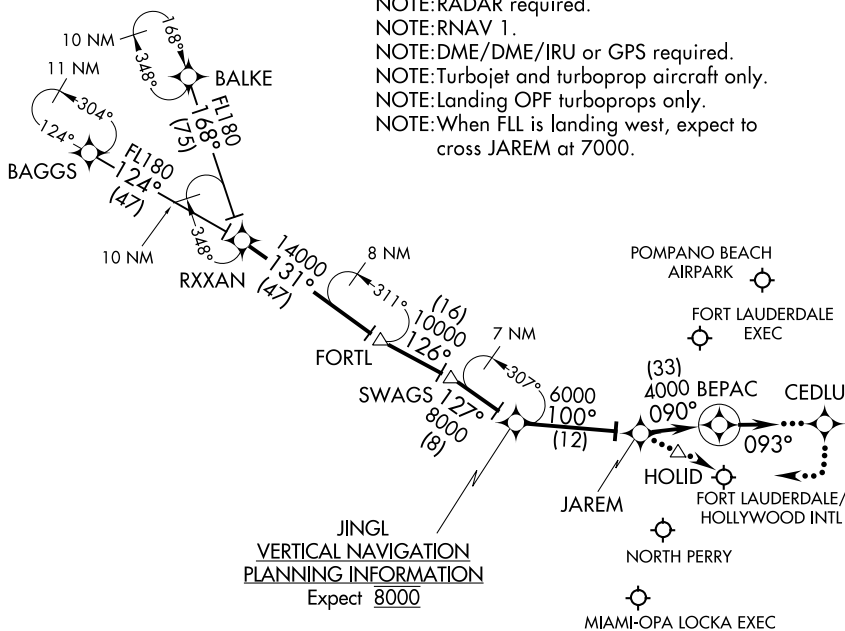
NOTE:RNAV 1.

NOTE:DME/DME/IRU or GPS required.

NOTE:Turbojet and turboprop aircraft only.

NOTE:Landing OPF turboprops only.

NOTE:When FLL is landing west, expect to cross JAREM at 7000.



NOTE: Chart not to scale.

JINGL SIX ARRIVAL (RNAV)

FORT LAUDERDALE, FLORIDA