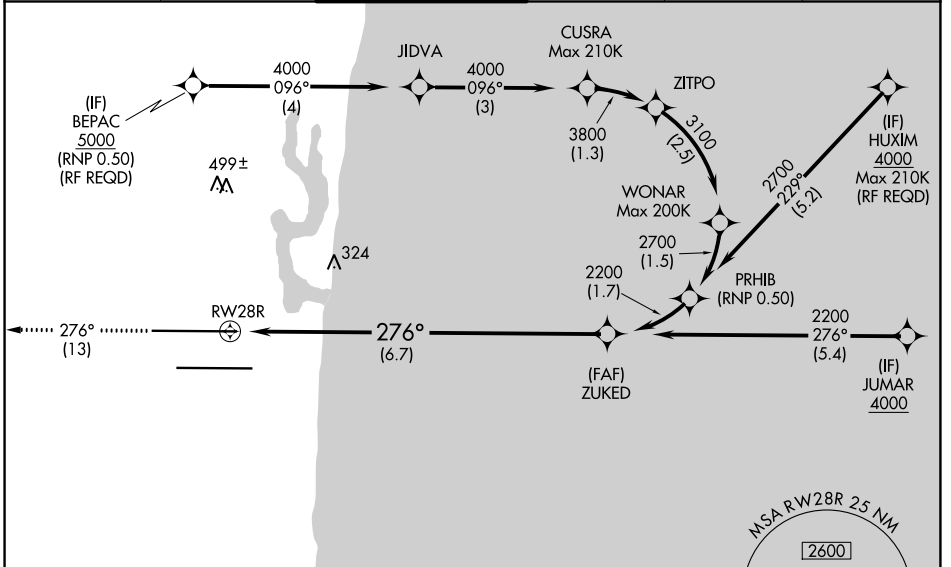


APP CRS 276°	Rwy Idg 8394
	TDZE 7
	Apt Elev 9

RNAV (RNP) Z RWY 28R

FORT LAUDERDALE/HOLLYWOOD INTL (FLL)

<p>▼ For uncompensated Baro-VNAV systems, procedure NA below 5°C (40°F) or above 54°C (130°F). GPS Required. Inop table does not apply.</p>		<p>MALSR</p>	<p>MISSED APPROACH: Climb to 4000 on track 276° to PIONN and hold, continue climb-in-hold to 4000.</p>		
D-ATIS 135.0	MIAMI APP CON 133.775 285.6	FORT LAUDERDALE TOWER 119.3 257.8	GND CON 121.4	CLNC DEL 128.4	CPDLC



SE-3, 15 JUL 2021 to 12 AUG 2021

SE-3, 15 JUL 2021 to 12 AUG 2021

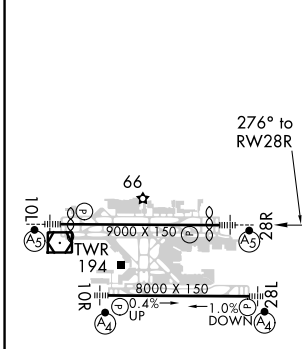
ELEV	9	D	TDZE	7
------	---	----------	------	---

MISSED APCH FIX

4 NM

PIONN

RADAR REQUIRED



4000 PIONN VGSi and RNAV glidepath not coincident (VGSi Angle 3.00/TCH 69).

See planview for multiple IF locations.

ZUKED 2200

GP 3.00° TCH 49

CATEGORY	A	B	C	D
RNP 0.15 DA		405-1 $\frac{3}{8}$	398 (400-1 $\frac{3}{8}$)	
RNP 0.30 DA		627-1 $\frac{3}{8}$	620 (700-1 $\frac{3}{8}$)	

HIRL Rwy 10L-28R and 10R-28L

AUTHORIZATION REQUIRED