

WAAS CH 77523 W17A	APP CRS 166°	Rwy Idg TDZE Apt Elev	15050 2825 2885
--	------------------------	-----------------------------	--

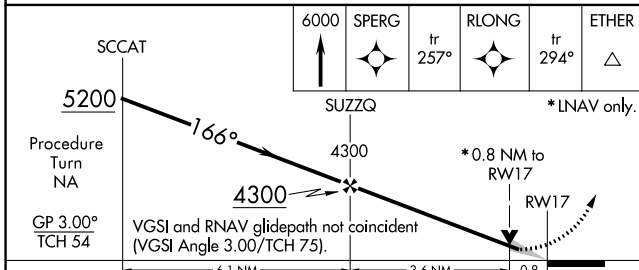
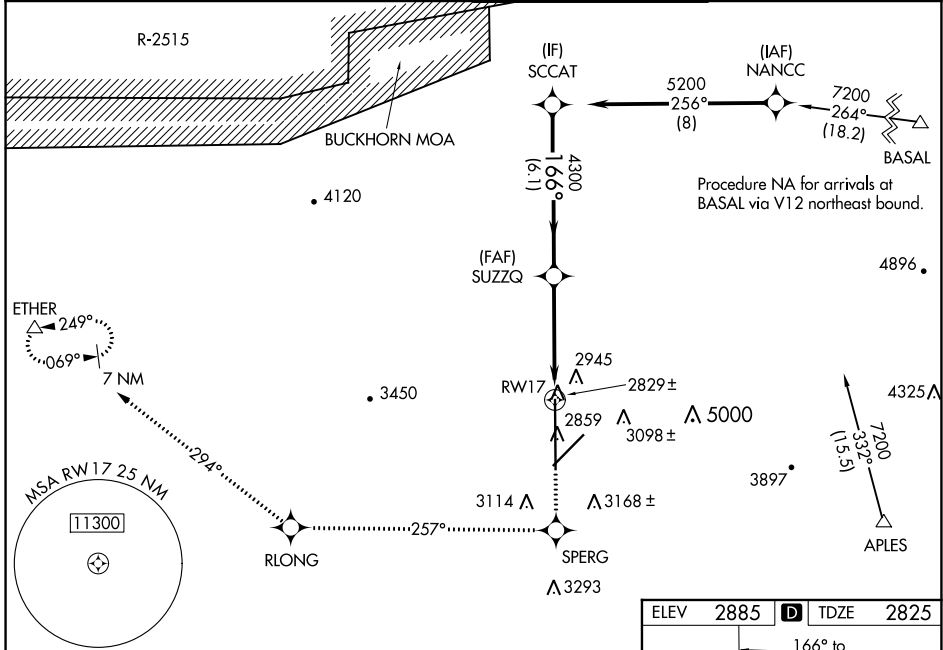
RNAV (GPS) RWY 17

SOUTHERN CALIFORNIA LOGISTICS (V'CV)

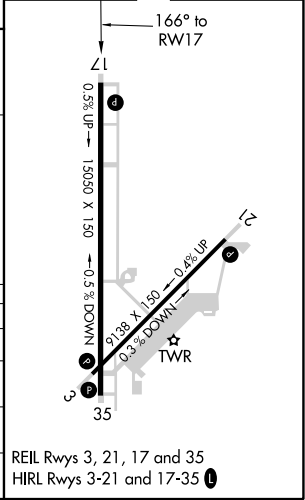
⚠ For uncompensated Baro-VNAV systems, LNAV/VNAV NA below -20°C (-4°F) or above 43°C (109°F). DME/DME RNP-0.3 NA. When local altimeter setting not received, use Edwards AFB altimeter setting and increase all DA and MDA 160 feet. Increase all visibilities ¾ mile. VDP and Baro-VNAV NA when using Edwards AFB altimeter setting. Circling NA for Cats C and D southeast of Rws 35 and 21.

MISSED APPROACH: Climb to 6000 direct SPERG and via 257° track to RLONG and via 294° track to ETHER and hold.

ATIS * 135.475	JOSHUA APP CON 124.55 363.0	VICTORVILLE TOWER * 118.35(CTAF) 282.225	GND CON 124.45
--------------------------	---------------------------------------	--	--------------------------



ELEV	2885	D	TDZE	2825
------	------	---	------	------



CATEGORY	A	B	C	D
LPV DA		3075/40	250 (200-¾)	
LNAV/VNAV DA		3240-1½	415 (400-1½)	
LNAV MDA		3140/50	315 (300-1)	
CIRCLING	3360-1 475 (500-1)	3420-1 535 (600-1)	3580-2 695 (700-2)	3780-3 895 (900-3)

REIL Rws 3, 21, 17 and 35
HIRL Rws 3-21 and 17-35

SW-3, 15 JUL 2021 to 12 AUG 2021

SW-3, 15 JUL 2021 to 12 AUG 2021