

WAAS CH 90324 W34A	APP CRS 342°	Rwy Idg 5332 TDZE 135 Apt Elev 137
--	------------------------	---

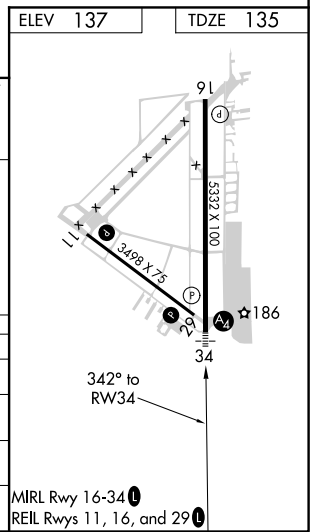
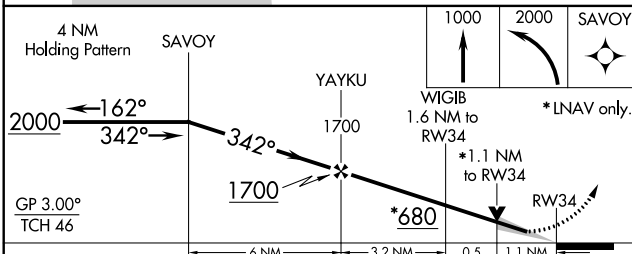
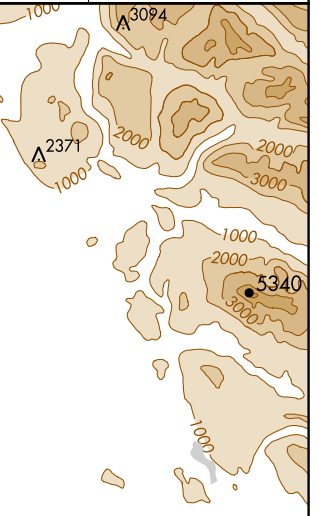
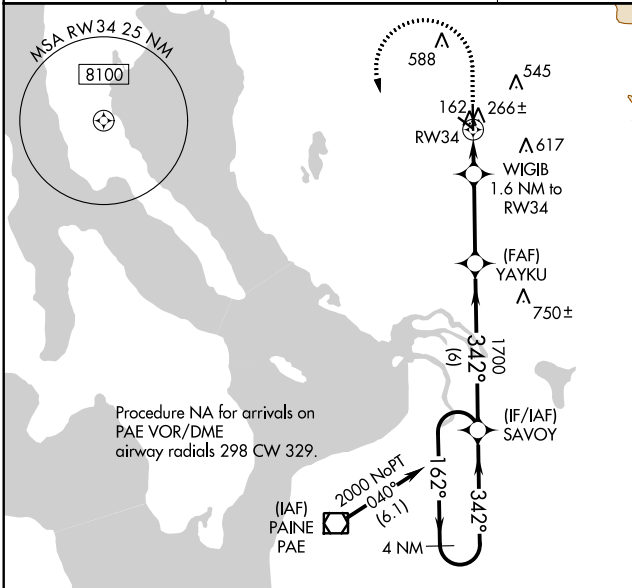
RNAV (GPS) RWY 34

ARLINGTON MUNI (A WO)

⚠ For uncompensated Baro-VNAV systems, LNAV/VNAV NA below -15°C (5°F) or above 43°C (109°F). DME/DME RNP-0.3 NA. When local altimeter setting not received, use Whidbey Island NAS (Ault Field) altimeter setting and increase all DA 66 feet and all MDA 80 feet and increase LNAV/VNAV all Cats, and LNAV and Circling Cats C and D visibility ¼ mile. For inoperative MALS, increase LNAV/VNAV Cat D visibility to 1 ¼ and increase LNAV Cat D visibility to 1 ⅝. For inoperative MALS when using Whidbey Island NAS (Ault Field) altimeter setting, increase LPV all Cats visibility to ¾, increase LNAV/VNAV Cat D visibility to 1 ½, and increase LNAV Cat D visibility to 1 ⅝. Baro-VNAV and VDP NA with Whidbey Island NAS (Ault Field) altimeter setting.

MALS
2
MISSED APPROACH:
 Climb to 1000 then climbing left turn to 2000 direct SAVOY and hold.

AWOS-3PT 135.625	SEATTLE APP CON 128.5 306.9	CLNC DEL 121.725	CTAF 122.725 1
----------------------------	---------------------------------------	----------------------------	---------------------------------



CATEGORY	A	B	C	D
LPV DA		335-¾	200 (200-¾)	
LNAV/VNAV DA		510-1	375 (400-1)	
LNAV MDA	520-¾	385 (400-¾)	520-⅞	385 (400-⅞)
CIRCLING	800-1 663 (700-1)	860-1 723 (800-1)	860-2 723 (800-2)	920-2½ 783 (800-2½)

NW-1, 15 JUL 2021 to 12 AUG 2021

NW-1, 15 JUL 2021 to 12 AUG 2021