

APP CRS	Rwy Idg	7100
249°	TDZE	2552
	Apt Elev	2567

RNAV (GPS) Y RWY 23

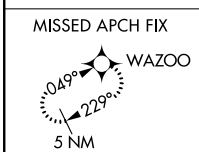
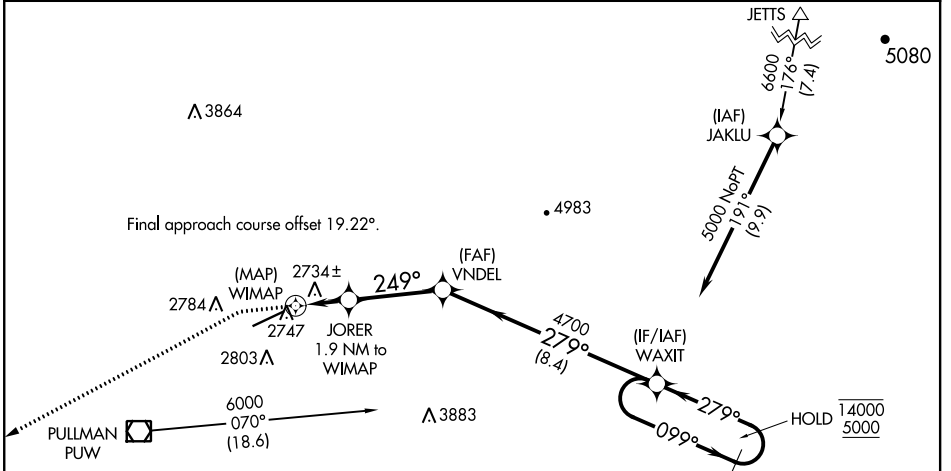
PULLMAN/MOSCOW RGNL (PUW)

RNP APCH.

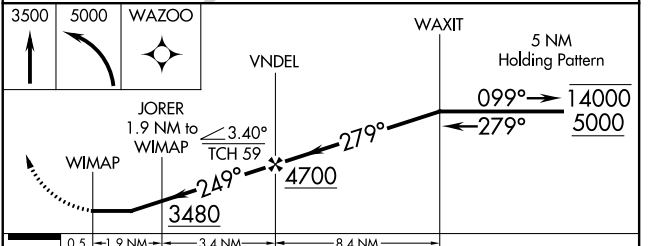
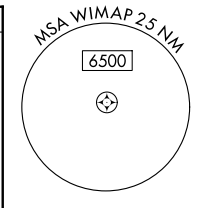
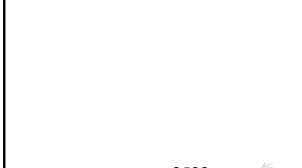
Procedure NA at night.
Rwy 23 helicopter visibility reduction below 1 SM NA.

MISSED APPROACH: Climb to 3500 then climbing left turn to 5000 direct WAZOO and hold.

ASOS 135.675	SEATTLE CENTER 123.95 290.55	UNICOM 122.8 (CTAF) 0
------------------------	--	---------------------------------



ELEV 2567	D	TDZE 2552
-----------	----------	-----------



REIL Rwy 23 1				
HIRL Rwy 5-23 1				
CATEGORY	A	B	C	D
LNAV MDA	3000-1	448 (500-1)	3000-1 $\frac{3}{8}$	448 (500-1 $\frac{3}{8}$)

NW-1, 15 JUL 2021 to 12 AUG 2021

NW-1, 15 JUL 2021 to 12 AUG 2021