


VOR/DME PUV <b>109.0</b> Chan 27	APP CRS <b>027°</b>	Rwy Idg TDZE Apt Elev	<b>7100</b> <b>2567</b> <b>2567</b>
--	------------------------	-----------------------------	---

# VOR RWY 5

PULLMAN/MOSCOW RGNL (PUW)

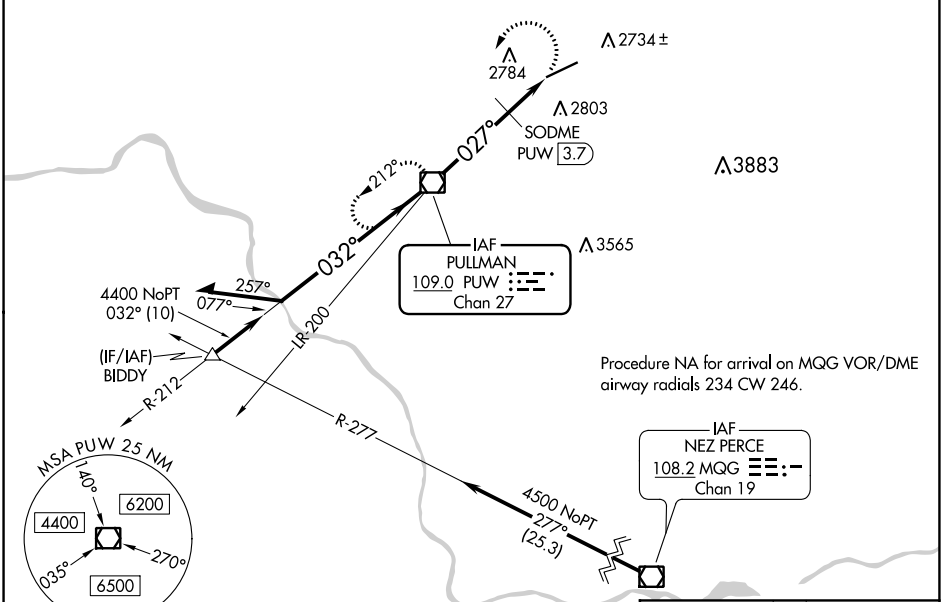
DME required.

▼ Procedure NA at night.  
 ▲ Rwy 5 helicopter visibility reduction below 1 SM NA.  
 Inop table does not apply to S-5 and SODME fix minimums Cats A/B.  
 For inop ALS, increase S-5 SODME fix minimums Cat C/D visibility to 1 1/8 SM.

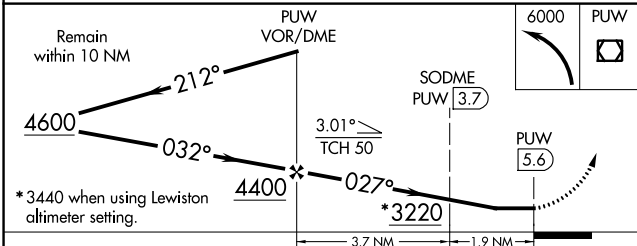
MALSR 

MISSED APPROACH: Climbing left turn to 6000 direct PUW VOR/DME and hold, continue climb-in-hold to 6000.

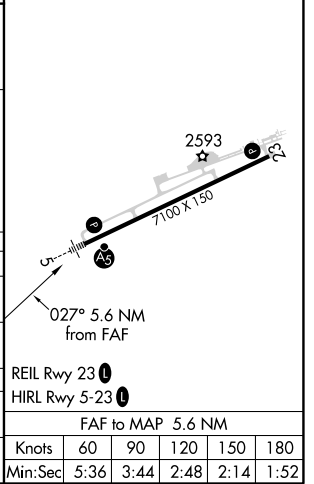
ASOS <b>135.675</b>	SEATTLE CENTER <b>123.95 290.55</b>	UNICOM <b>122.8 (CTAF) 0</b>
------------------------	--	---------------------------------



ELEV 2567	<b>D</b> TDZE 2567
-----------	--------------------



CATEGORY	A	B	C	D
S-5	3220/50	653 (700-1)	3220-1 3/8	653 (700-1 1/8)
<b>C</b> CIRCLING	3220-1	653 (700-1)	3220-1 7/8	3420-2 3/4 653 (700-1 1/8) 853 (900-2 3/4)
SODME FIX MINIMUMS				
S-5	3040/50 473 (500-1)			
<b>C</b> CIRCLING	3080-1 513 (600-1)	3120-1 553 (600-1)	3140-1 1/2 573 (600-1 1/2)	3420-2 3/4 853 (900-2 3/4)



NW-1, 15 JUL 2021 to 12 AUG 2021

NW-1, 15 JUL 2021 to 12 AUG 2021

FAF to MAP 5.6 NM					
Knots	60	90	120	150	180
Min:Sec	5:36	3:44	2:48	2:14	1:52