

WAAS CH <b>40211</b> <b>W08A</b>	APP CRS <b>078°</b>	Rwy Idg TDZE Apt Elev	<b>8703</b> <b>4149</b> <b>4154</b>
--	------------------------	-----------------------------	---

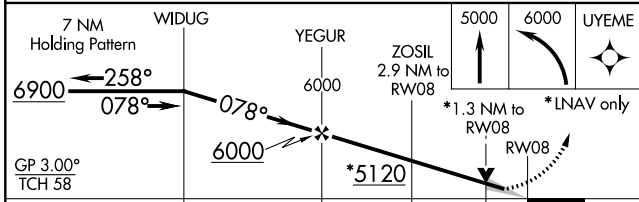
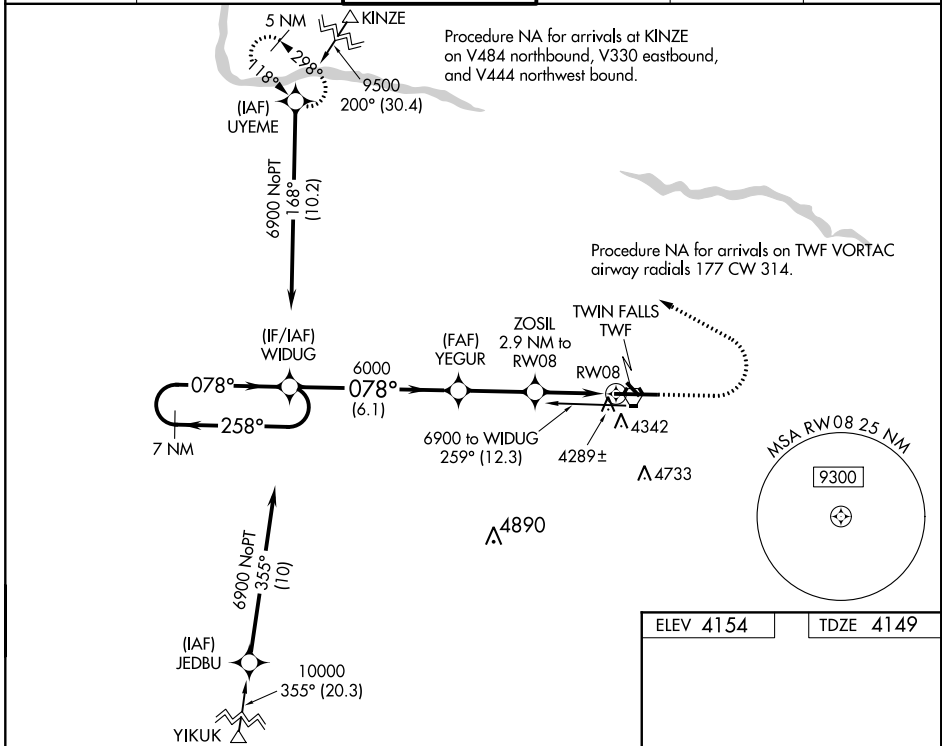
# RNAV (GPS) RWY 8

JOSLIN FLD-MAGIC VALLEY RGNL (TWF)

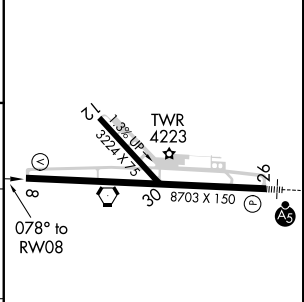
**▼** Night landing: Rwy 30 NA. Baro-VNAV NA when using Jerome altimeter setting.  
**▲** For uncompensated Baro-VNAV systems, LNAV/VNAV NA below -16°C (4°F) or above 48°C (120°F). DME/DME RNP-0.3 NA. VDP NA with Jerome altimeter setting.  
 When local altimeter setting not received, use Jerome altimeter setting and increase all DA 49 feet and all MDA 60 feet, and increase LPV and LNAV/VNAV all Cats visibility ½ mile, and LNAV Cats C and D visibility ½ mile, and Circling Cat C visibility ¼ mile.

**MISSED APPROACH:** Climb to 5000 then climbing left turn to 6000 direct UYEME and hold.

ASOS <b>135.025</b>	TWIN FALLS APP CON * <b>126.7 353.75</b>	TWIN FALLS TOWER * <b>118.2 (CTAF) 0 317.5</b>	GND CON <b>121.7</b>	CLNC DEL <b>123.65</b>	UNICOM <b>122.95</b>
------------------------	---	---	-------------------------	---------------------------	-------------------------



ELEV 4154	TDZE 4149
-----------	-----------



CATEGORY	A	B	C	D
LPV DA		4399-3/4	250 (300-3/4)	
LNAV/VNAV DA		4673-13/4	524 (600-13/4)	
LNAV MDA	4620-1	471 (500-1)	4620-13/8	471 (500-13/8)
CIRCLING	4700-1 546 (600-1)	4780-1 626 (700-1)	5100-23/8 946 (1000-23/8)	5100-3 946 (1000-3)

REIL Rwy 8  
 HIRL Rwy 8-26

NW-1, 15 JUL 2021 to 12 AUG 2021

NW-1, 15 JUL 2021 to 12 AUG 2021