

APP CRS	Rwy Idg	<b>9007</b>
<b>200°</b>	TDZE	<b>2977</b>
	Apt Elev	<b>2977</b>

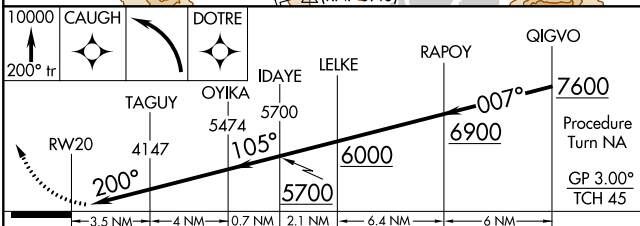
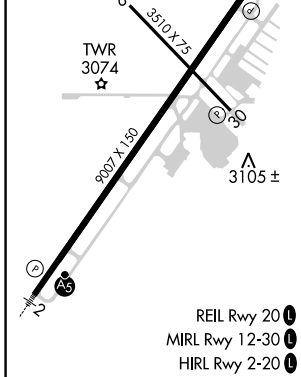
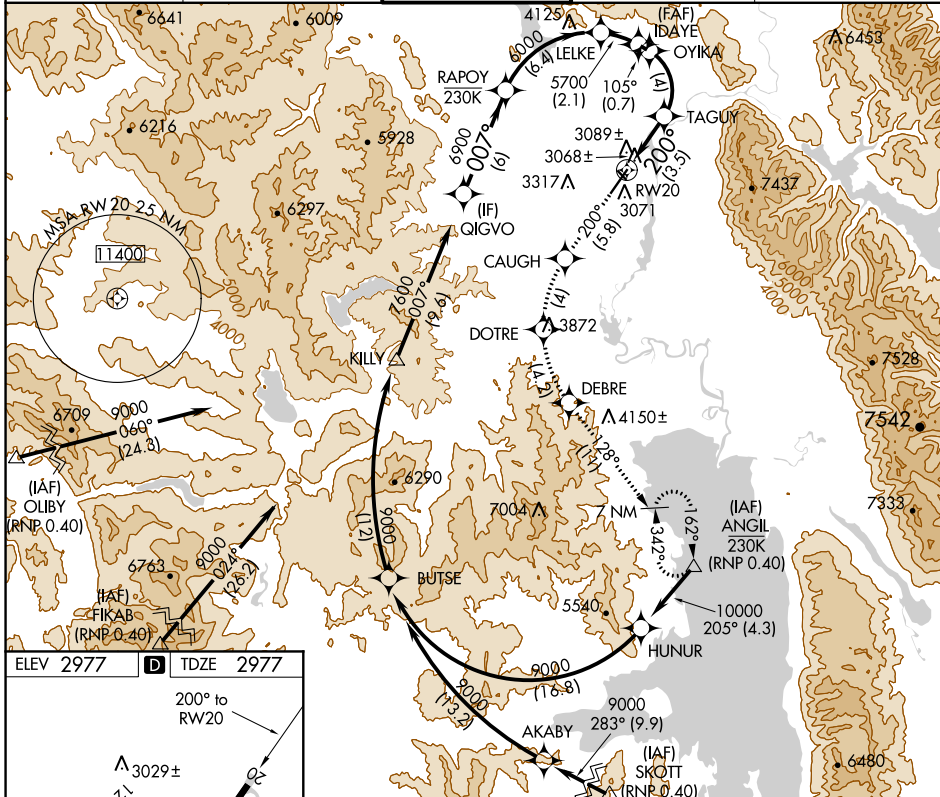
# RNAV (RNP) RWY 20

GLACIER PARK INTL (GPI)

**RF and GPS required.** For uncompensated Baro-VNAV systems, procedure NA below -21°C (-5°F) or above 43°C (109°F).  
 Visibility reduction by helicopters NA.  
 \*Missed approach requires minimum climb of 235 feet per NM to 6900.

**MISSED APPROACH:** Climb to 10000 via 200° track to CAUGH and via left turn to DOTRE, and via left turn to DEBRE, and via 128° track to ANGLI and hold, continue climb-in-hold to 10000.

ATIS	SALT LAKE CENTER	GLACIER TOWER*	GND CON	UNICOM
<b>132.625</b>	<b>133.4 285.4</b>	<b>124.55 (CTAF) 0</b>	<b>121.6</b>	<b>122.95</b>



CATEGORY	A	B	C	D
RNP 0.10 DA*		3344-1¼	367 (400-1¼)	
RNP 0.30 DA*		3446-1¾	469 (500-1¾)	
RNP 0.30 DA		3662-2½	685 (700-2½)	

**AUTHORIZATION REQUIRED**

NW-1, 15 JUL 2021 to 12 AUG 2021

NW-1, 15 JUL 2021 to 12 AUG 2021