

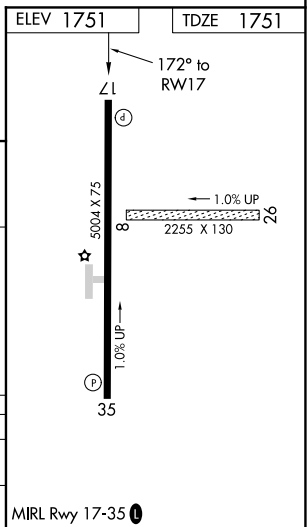
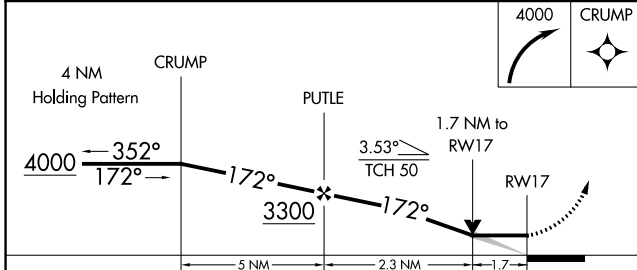
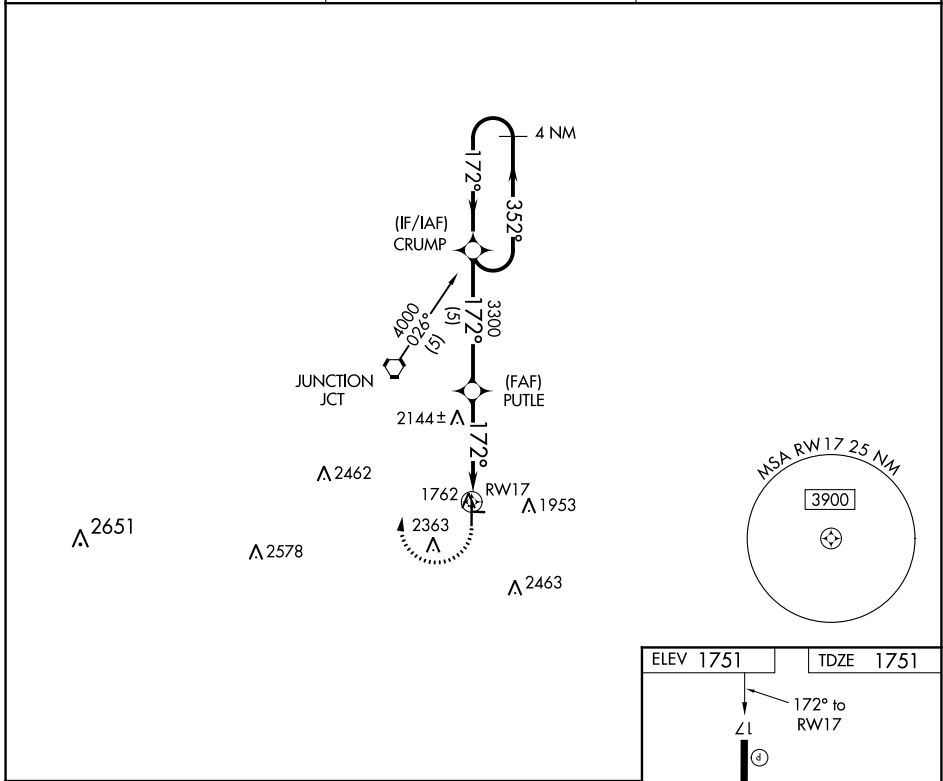
APP CRS 172°	Rwy Idg 5004
	TDZE 1751
	Apt Elev 1751

RNAV (GPS) RWY 17

KIMBLE COUNTY (JCT)

NA	Circling NA to Rwy 8-26. GPS or RNP-0.3 REQUIRED. DME/DME RNP-0.3 NA.	MISSED APPROACH: Climbing right turn to 4000 direct CRUMP WP and hold.
-----------	---	--

ASOS 119.275	HOUSTON CENTER 125.75 346.4	UNICOM 122.8 (CTAF) 1
------------------------	---------------------------------------	--



CATEGORY	A	B	C	D
LNAV MDA	2420-1	669 (700-1)	2420-1¾ 669 (700-1¾)	NA
CIRCLING	2420-1	669 (700-1)	2740-3 989 (1000-3)	NA

SC-3, 15 JUL 2021 to 12 AUG 2021

SC-3, 15 JUL 2021 to 12 AUG 2021