

(GED1.ATR) 18312

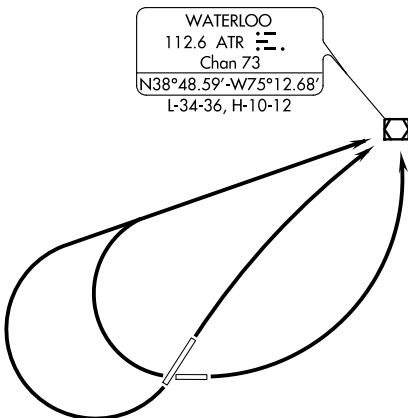
AL-935 (FAA)

DELAWARE COASTAL (GED)
GEORGETOWN, DELAWARE

GEORGETOWN ONE DEPARTURE

DOVER APP CON
132.425 257.875
DOVER CLNC DEL
125.55
ASOS
118.375
UNICOM
123.0

TOP ALTITUDE:
2000



TAKEOFF MINIMUMS:

Rwys 4, 10, 28: Standard.

Rwy 22: 200-1¼ or standard with a minimum climb of 201' per NM to 300, or alternatively with standard takeoff minimums and a normal 200' per NM climb gradient, takeoff must occur no later than 1100' prior to DER.

NOTE: Chart not to scale.



DEPARTURE ROUTE DESCRIPTION

TAKEOFF RUNWAY 4: Turn right direct ATR VOR/DME, thence . . .

TAKEOFF RUNWAY 10: Turn left direct ATR VOR/DME, thence . . .

TAKEOFF RUNWAY 22: Turn right direct ATR VOR/DME, thence . . .

TAKEOFF RUNWAY 28: Turn right direct ATR VOR/DME, thence . . .

. . . maintain 2000. Expect clearance to filed altitude three (3) minutes after departure.

GEORGETOWN ONE DEPARTURE

(GED1.ATR) 10NOV16

GEORGETOWN, DELAWARE
DELAWARE COASTAL (GED)

NE-3, 15 JUL 2021 to 12 AUG 2021

NE-3, 15 JUL 2021 to 12 AUG 2021