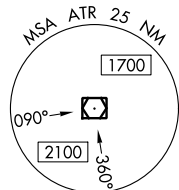


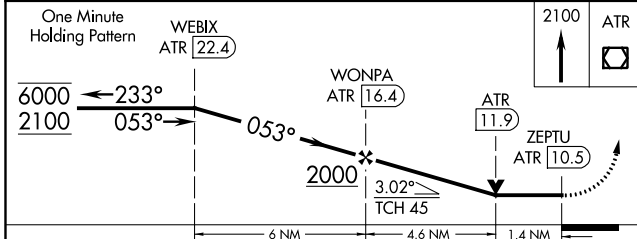
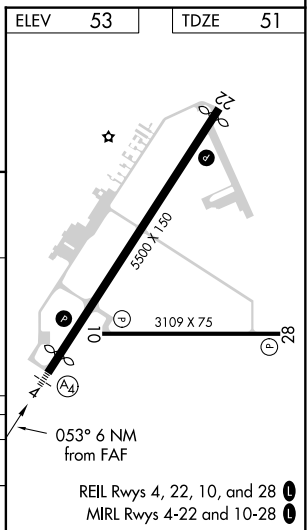
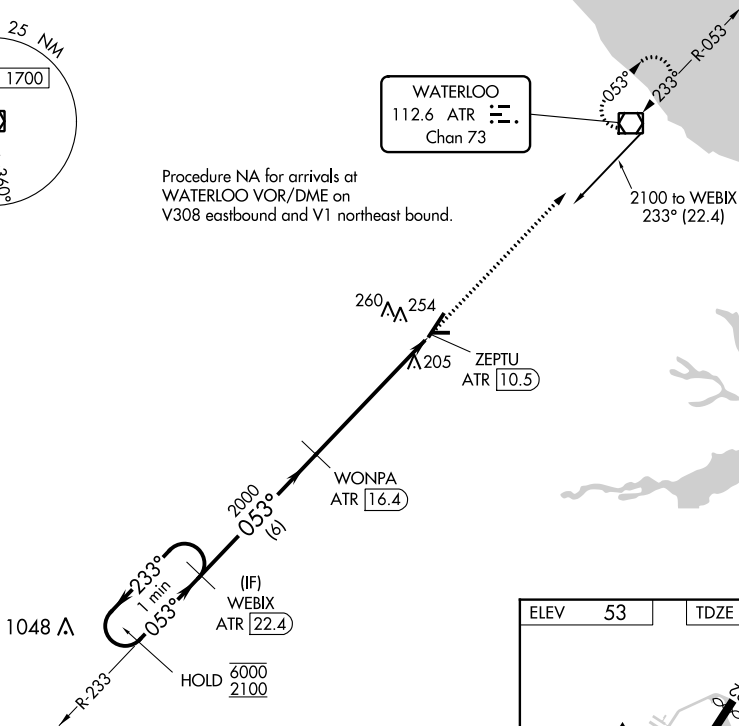
VOR/DME ATR	APP CRS	Rwy Idg	5130
112.6	053°	TDZE	51
Chan 73		Apt Elev	53

VOR RWY 4
DELAWARE COASTAL (GED)

DME required.		MALS ④	MISSED APPROACH: Climb to 2100 direct ATR VOR/DME and hold.
ASOS 118.375	DOVER APP CON 132.425 257.875	UNICOM 123.0 (CTAF) ①	



Procedure NA for arrivals at
WATERLOO VOR/DME on
V308 eastbound and V1 northeast bound.



CATEGORY	A	B	C	D
S-04	540-1	489 (500-1)	540-1 3/8	489 (500-1 3/8)
CIRCLING	560-1 507 (600-1)	580-1 527 (600-1)	580-1 1/2 527 (600-1 1/2)	620-2 567 (600-2)

NE-3, 15 JUL 2021 to 12 AUG 2021

NE-3, 15 JUL 2021 to 12 AUG 2021