

|  |                        |   |
|--|------------------------|---|
| WAAS<br>CH <b>86604</b><br><b>W25A</b> | APP CRS<br><b>245°</b> | Rwy Idg <b>4158</b><br>TDZE <b>144</b><br>Apt Elev <b>151</b> |
|--|------------------------|---|

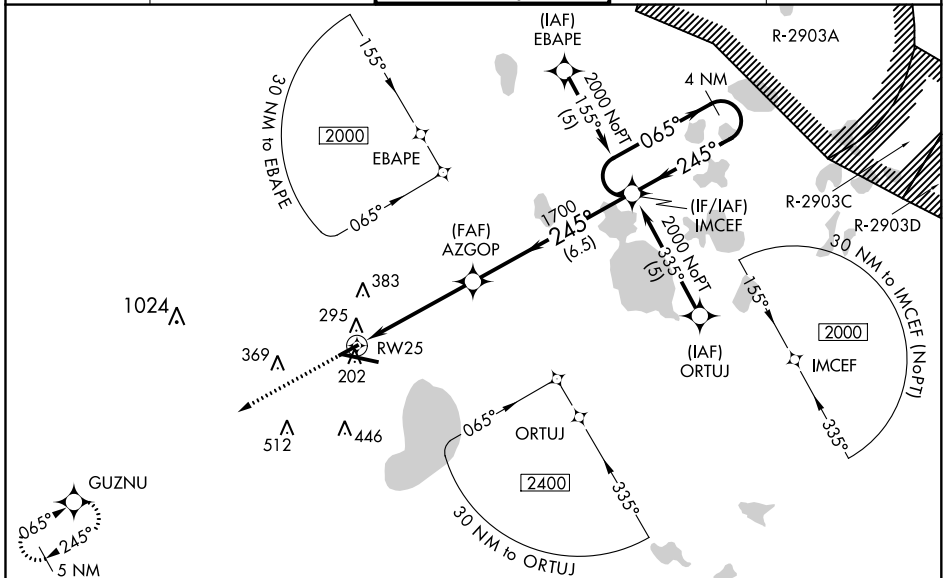
# RNAV (GPS) RWY 25

GAINESVILLE RGNL (GNV)

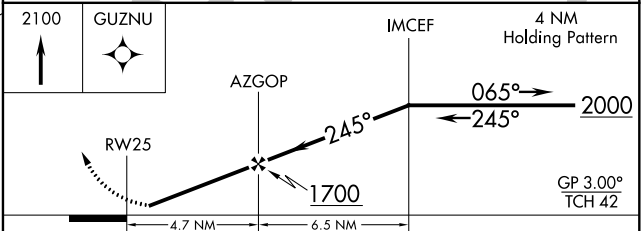
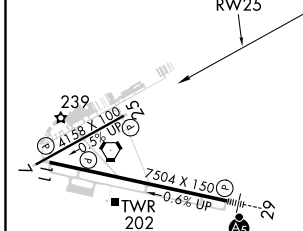
**⚠** Baro-VNAV NA when using Ocala Intl-Jim Taylor Fld altimeter setting. For uncompensated Baro-VNAV systems, LNAV/VNAV NA below -15° C (5° F) or above 48° C (118° F).  
**⚠** DME/DME RNP-0.3 NA. Visibility reduction by helicopters NA. When local altimeter setting not received, use Ocala Intl-Jim Taylor Fld altimeter setting and increase LPV DA to 582 feet and all Cats visibility ¼ SM; increase LNAV/VNAV DA to 775 feet and all Cats visibility ¼ SM; increase all MDAs 100 feet and increase LNAV Cat C and Circling Cat C visibility ¼ SM and LNAV Cat D and Circling Cat D ½ SM. When VGSI inoperative, straight-in/Circling Rwy 25 procedure NA at night.

**MISSED APPROACH:**  
Climb to 2100 direct GUZNU and hold.

|                       |   |  |                         |                         |
|-----------------------|---|--|-------------------------|-------------------------|
| ATIS<br><b>127.15</b> | JACKSONVILLE APP CON<br><b>118.175 338.25</b> | GAINESVILLE TOWER★<br><b>119.55 (CTAF) 0 353.7</b> | GND CON<br><b>121.7</b> | UNICOM<br><b>122.95</b> |
|-----------------------|---|--|-------------------------|-------------------------|



|          |          |
|----------|----------|
| ELEV 151 | TDZE 144 |
|----------|----------|



|              |                      |                      |                        |                      |
|--------------|----------------------|----------------------|------------------------|----------------------|
| CATEGORY     | A                    | B                    | C                      | D                    |
| LPV DA       | 501-1¼ 357 (400-1¼)  |                      |                        |                      |
| LNAV/VNAV DA | 694-2 550 (600-2)    |                      |                        |                      |
| LNAV MDA     | 560-1                | 416 (500-1)          | 560-1¼                 | 416 (500-1¼)         |
| CIRCLING     | 620-1<br>469 (500-1) | 700-1<br>549 (600-1) | 760-1¾<br>609 (700-1¾) | 820-2<br>669 (700-2) |

REIL Rwy 11  
MIRL Rwy 7-25  
HIRL Rwy 11-29

SE-3, 15 JUL 2021 to 12 AUG 2021

SE-3, 15 JUL 2021 to 12 AUG 2021