

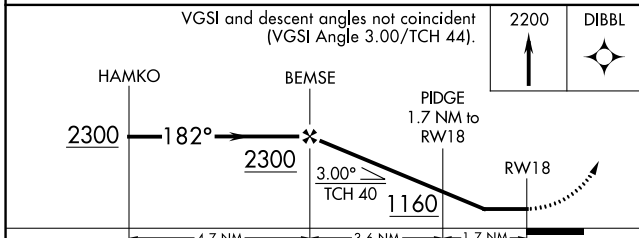
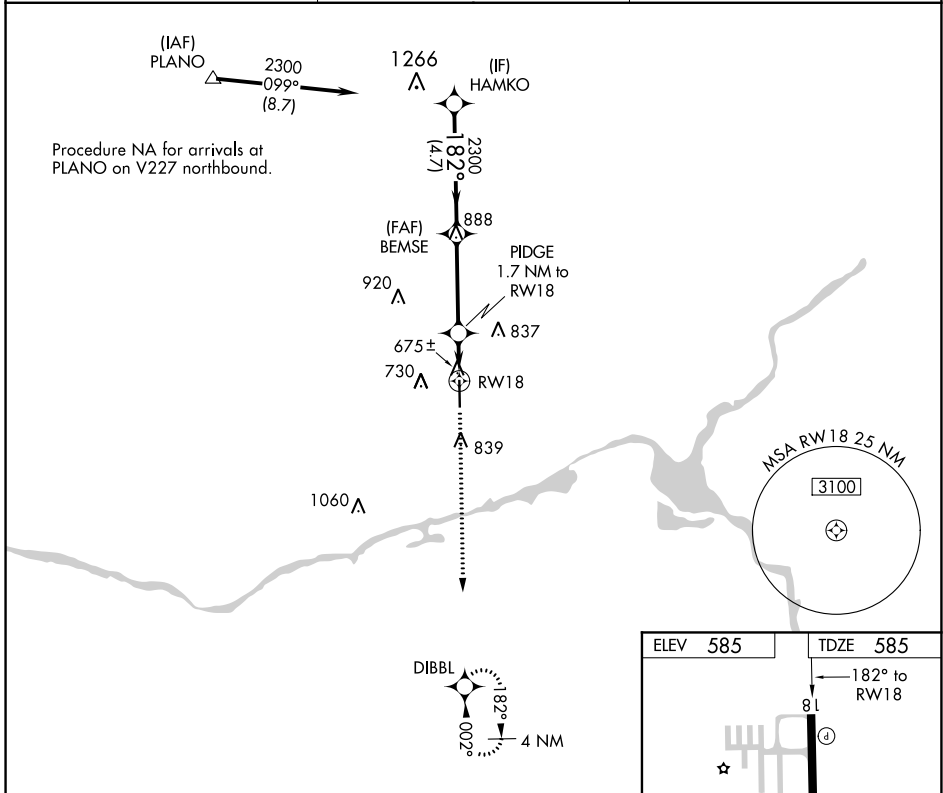
APP CRS	Rwy Idg	<b>5501</b>
<b>182°</b>	TDZE	<b>585</b>
	Apt Elev	<b>585</b>

# RNAV (GPS) RWY 18

MORRIS MUNI-JAMES R WASHBURN FIELD (C09)

RNP APCH.	<p>▼ Rwy 18 helicopter visibility reduction below 1 SM NA. When local altimeter setting not received, use Joliet altimeter setting and increase all MDA 40 feet, and increase LNAV Cat C visibility 1/8 mile. Straight-in, Circling Rwy 18 NA at night.</p>	<p>▲ MISSED APPROACH: Climb to 2200 direct DIBBL and hold.</p>
-----------	---	--

AWOS-3 <b>118.175</b>	CHICAGO APP CON <b>119.35 354.075</b>	UNICOM <b>122.8 (CTAF) 0</b>
--------------------------	--	---------------------------------



ELEV 585	TDZE 585
----------	----------

182° to RWY 18

8L

5501 X 75

0.4% UP

36

MIRL Rwy 18-36 0

REIL Rwys 18 and 36 0

CATEGORY	A	B	C	D
LNAV MDA	940-1	355 (400-1)		NA
▲ CIRCLING	980-1 395 (400-1)	1140-1 555 (600-1)	1140-1½ 555 (600-1½)	NA

EC-3, 15 JUL 2021 to 12 AUG 2021

EC-3, 15 JUL 2021 to 12 AUG 2021