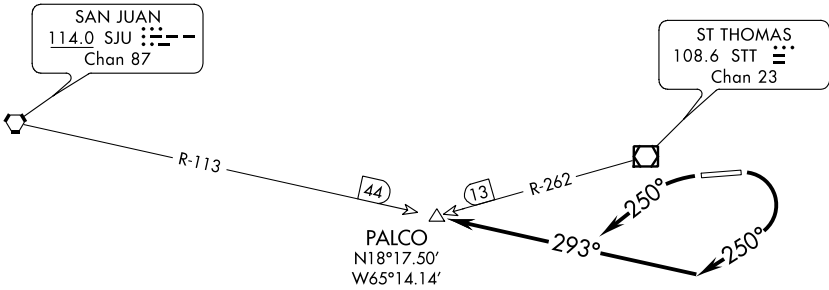


PALCO SEVEN DEPARTURE

ATIS 124.0
GND CON
121.9
ST THOMAS TOWER ★
118.8 (CTAF) 257.6
118.1 (NORTH OF ISLAND)
SAN JUAN DEP CON
128.65 279.6

**TOP ALTITUDE:
3000**



TAKE-OFF MINIMUMS:

Rwy 10: 400-1 with minimum climb of 462' per NM to 1400 or 2100-2½ for climb in visual conditions.
Rwy 28: 800-3 or Standard with a minimum climb of 366' per NM to 1000.

NOTE: Chart not to scale.

NOTE: DME or RADAR Required.



DEPARTURE ROUTE DESCRIPTION

TAKEOFF RWY 10: Turn right heading 250° (unless assigned otherwise) to intercept the SJU R-113 to PALCO INT, or climb in visual conditions to cross Cyril E. King airport at or above 2100, then on SJU R-113 to PALCO INT. Thence

TAKEOFF RWY 28: Turn left heading 250° (unless assigned otherwise) to intercept the SJU R-113 to PALCO INT. Thence

. . . . Maintain 3000 unless assigned lower altitude.
Expect clearance to flight level 280 or requested altitude if lower ten minutes after departure. Contact San Juan Departure.

SE-3, 15 JUL 2021 to 12 AUG 2021

SE-3, 15 JUL 2021 to 12 AUG 2021