

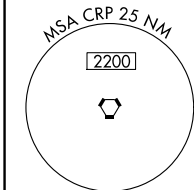
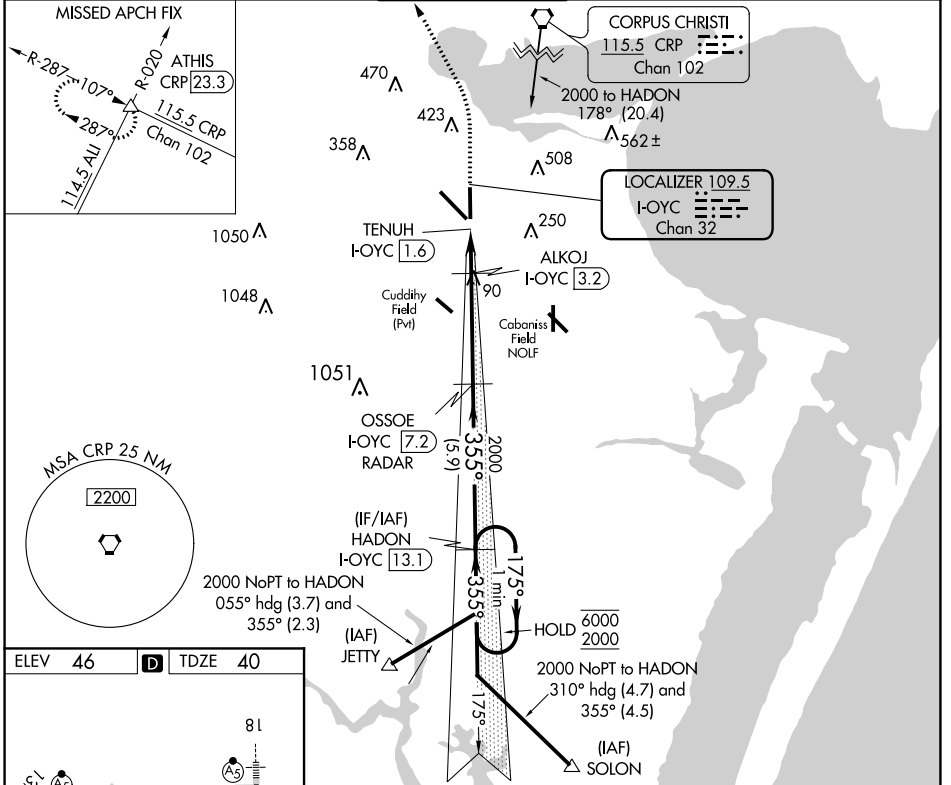
LOC/DME I-OYC 109.5 Chan 32	APP CRS 355°	Rwy Idg 6080 TDZE 40 Apt Elev 46
---	------------------------	---

ILS or LOC RWY 36

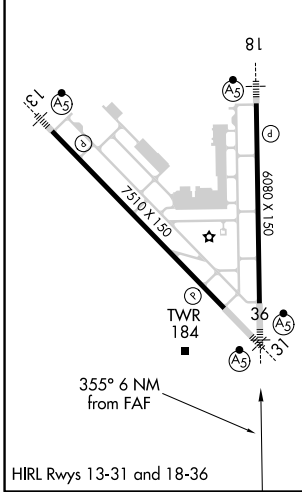
CORPUS CHRISTI INTL (CRP)

DME required for LOC only.	MALSR	MISSED APPROACH: Climb to 700 then climbing left turn to 2000 on heading 338° and on CRP VORTAC R-287 to ATHIS INT/CRP 23.3 DME and hold.
▼ For inop ALS, increase S-ILS 36 Cat E visibility to RVR 4000 and S-LOC 36 Cat C/D/E visibility to RVR 4500.		

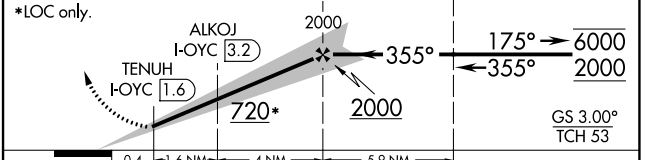
ATIS 126.8	CORPUS APP CON 120.9 348.725	CORPUS TOWER 119.4 257.8	GND CON 121.9 269.15	CLNC DEL 118.55
----------------------	--	------------------------------------	--------------------------------	---------------------------



ELEV 46	D	TDZE 40
---------	----------	---------



700	2000	ATHIS	ILS unusable inside DA. LOC unusable within 1.6 DME.
↑	hdg 338°	CRP R-287	
		OSOUE I-OYC 7.2	HADON I-OYC 13.1
		RADAR	One Minute Holding Pattern



CATEGORY	A	B	C	D	E
S-ILS 36		240/24	200 (200-1/2)		
S-LOC 36		340/24	300 (300-1/2)		
C CIRCLING	500-1 454 (500-1)	580-1 534 (600-1)	820-2 1/4 774 (800-2 1/4)	820-2 1/2 774 (800-2 1/2)	820-2 3/4 774 (800-2 3/4)

SC-3, 15 JUL 2021 to 12 AUG 2021

SC-3, 15 JUL 2021 to 12 AUG 2021