

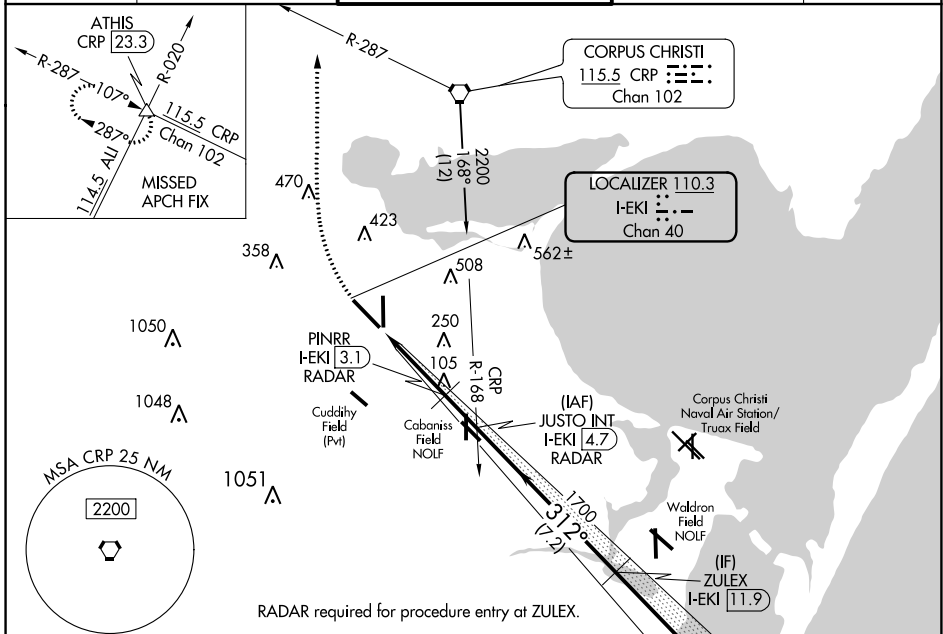
LOC/DME I-EKI 110.3 Chan 40	APP CRS 312°	Rwy Idg TDZE Apt Elev	7510 43 46
--	------------------------	-----------------------------	---------------------------------------

LOC RWY 31

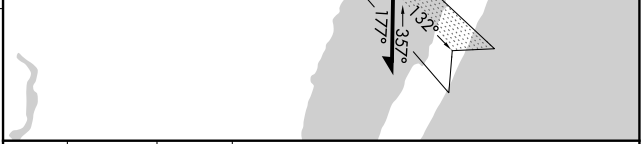
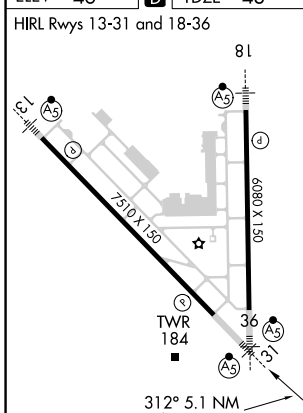
CORPUS CHRISTI INTL (CRP)

<p>⚠ DME or RADAR required. For inop MALSR, increase S-LOC 31 Cats C/D/E visibility to 1 mile.</p>	<p>MALSR</p>	<p>MISSED APPROACH: Climb to 700 then climbing right turn to 2000 on heading 335° and CRP VORTAC R-287 to ATHIS INT/CRP VORTAC 23.3 DME and hold.</p>
---	--------------	---

ATIS 126.8	CORPUS APP CON 120.9 348.725	CORPUS TOWER 119.4 257.8	GND CON 121.9 269.15	CLNC DEL 118.55
----------------------	--	------------------------------------	--------------------------------	---------------------------



ELEV 46	D	TDZE 43
---------	----------	---------



FAF to MAP 5.1 NM					
Knots	60	90	120	150	180
Min:Sec	5:06	3:24	2:33	2:02	1:42

700	2000	ATHIS	JUSTO INT	Remain within 15 NM
↑	hdg 335° CRP R-287	△	I-EKI 4.7 RADAR	
I-EKI 0.3	I-EKI 0.6	PINRR I-EKI 3.1 RADAR	2200	1320
	3.35° TCH 50		1700	2000
			1300	
				VGSI and descent angles not coincident (VGSI Angle 3.00/ TCH 50).

CORPUS CHRISTI, TEXAS
Amdt 9 26MAY16

CATEGORY	A	B	C	D	E
S-LOC 31	400-1/2	357 (400-1/2)	400-5/8	357 (400-5/8)	
C CIRCLING	500-1 454 (500-1)	580-1 534 (600-1)	820-2 1/4 774 (800-2 1/4)	820-2 1/2 774 (800-2 1/2)	820-2 3/4 774 (800-2 3/4)

27°46'N-97°30'W

CORPUS CHRISTI INTL (CRP) LOC RWY 31

SC-3, 15 JUL 2021 to 12 AUG 2021

SC-3, 15 JUL 2021 to 12 AUG 2021