


# RNAV (RNP) Z RWY 31

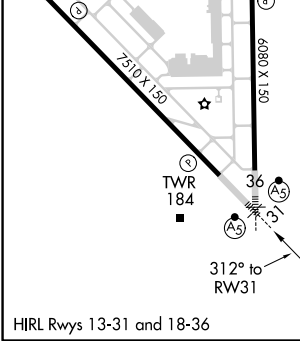
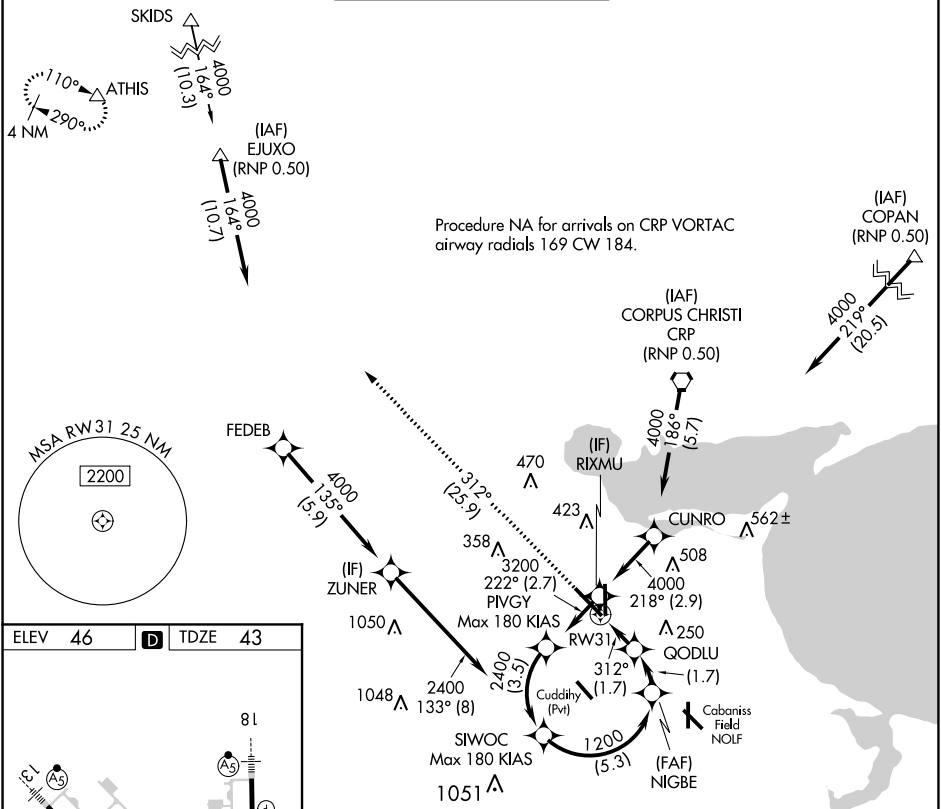
CORPUS CHRISTI INTL (CRP)

APP CRS	Rwy ldg	<b>7510</b>
<b>312°</b>	TDZE	<b>43</b>
	Apt Elev	<b>46</b>

**▼** For uncompensated Baro-VNAV systems, procedure NA below -1°C (31°F) or above 54°C (130°F). GPS and RF required. For inop MALSR, increase RNP 0.14 all Cats visibility to 7/8 mile.  
 \*Missed approach requires minimum climb of 335 feet per NM to 500.

**MALSR**  
  
**MISSED APPROACH:** Climb to 2000 on track 312° to ATHIS and hold.

<b>ATIS</b> <b>126.8</b>	<b>CORPUS APP CON</b> <b>120.9 348.725</b>	<b>CORPUS TOWER</b> <b>119.4 257.8</b>	<b>GND CON</b> <b>121.9 269.15</b>	<b>CLNC DEL</b> <b>118.55</b>
-----------------------------	---	---	---------------------------------------	----------------------------------



2000	ATHIS	See planview for multiple IF locations.	SIWOC
↑	fr 312°		
RW31	GODLU 646	NIGBE 1200	2400
	1.7 NM	1.7 NM	5.3 NM
CATEGORY	A	B	C
RNP 0.14 DA*		303-1/2	260 (300-1/2)
RNP 0.30 DA		384-5/8	341 (400-5/8)

GP 3.00°  
TCH 50

**AUTHORIZATION REQUIRED**

SC-3, 15 JUL 2021 to 12 AUG 2021

SC-3, 15 JUL 2021 to 12 AUG 2021