


# RNAV (RNP) Z RWY 36

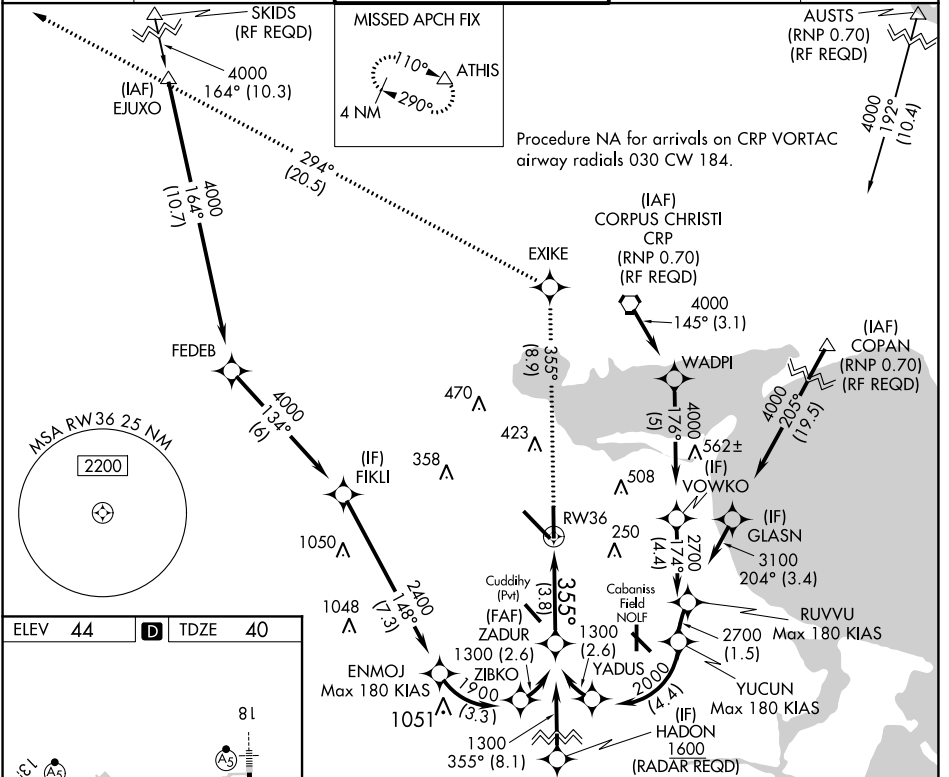
CORPUS CHRISTI INTL (CRP)

APP CRS <b>355°</b>	Rwy Idg TDZE Apt Elev	<b>6080</b> <b>40</b> <b>44</b>
------------------------	-----------------------------	---------------------------------------

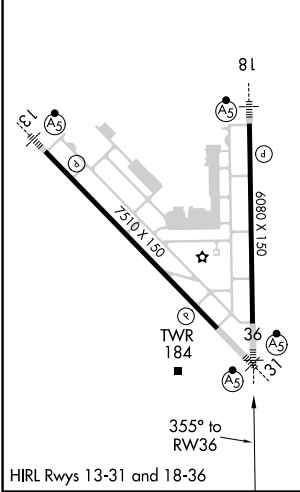
▼ For uncompensated Baro-VNAV systems, procedure NA below -1°C (-31°F) or above 54°C (130°F). GPS required. For inop MALSR, increase RNP 0.11 visibility all Cats to RVR 4000. For inop MALSR, increase RNP 0.30 visibility all Cats to RVR 5900.



MALSR  MISSED APPROACH: Climb to 2000 on track 355° to EXIKE and on track 294° to ATHIS and hold.

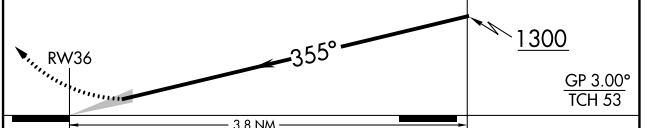
ATIS <b>126.8</b>	CORPUS APP CON <b>120.9 348.725</b>	CORPUS TOWER <b>119.4 257.8</b>	GND CON <b>121.9 269.15</b>	CLNC DEL <b>118.55</b>
----------------------	--	------------------------------------	--------------------------------	---------------------------



ELEV 44	<b>D</b>	TDZE 40
---------	----------	---------



2000	EXIKE	tr 355°	ATHIS	See Planview for multiple IF locations.	ZADUR
↑		tr 294°			1300



CATEGORY	A	B	C	D
RNP 0.11 DA		290/24	250 (300-½)	
RNP 0.30 DA		400/34	360 (400-½)	

**AUTHORIZATION REQUIRED**

SC-3, 15 JUL 2021 to 12 AUG 2021

SC-3, 15 JUL 2021 to 12 AUG 2021