

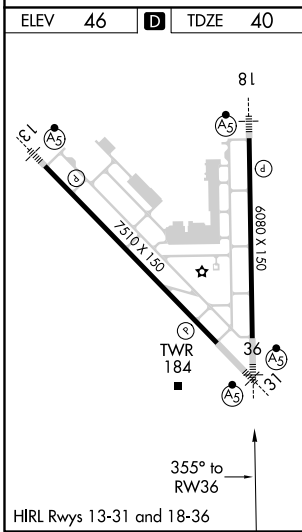
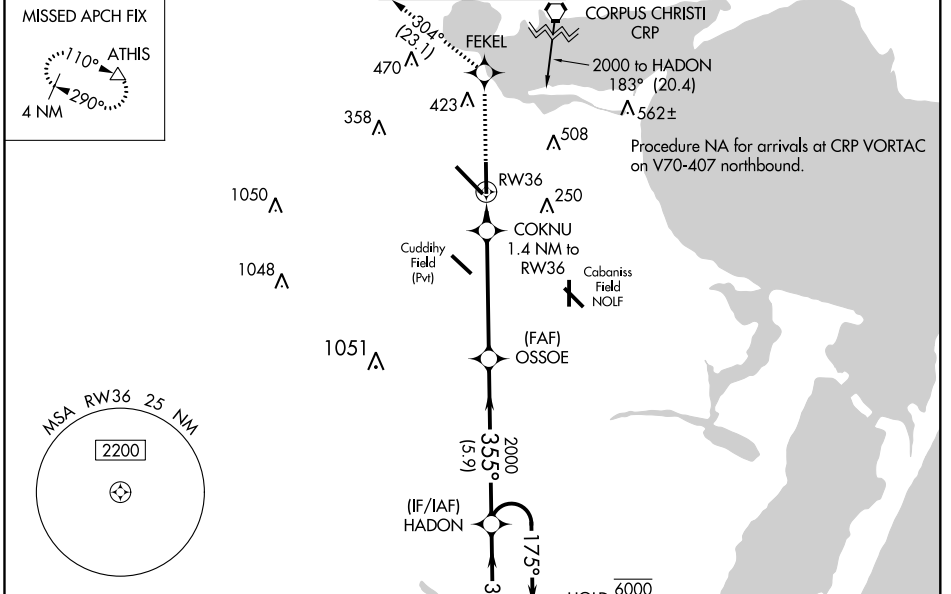
WAAS CH 69617 W36A	APP CRS 355°	Rwy ldg TDZE Apt Elev	6080 40 46
--	------------------------	-----------------------------	---------------------------------------

RNAV (GPS) Y RWY 36

CORPUS CHRISTI INTL (CRP)

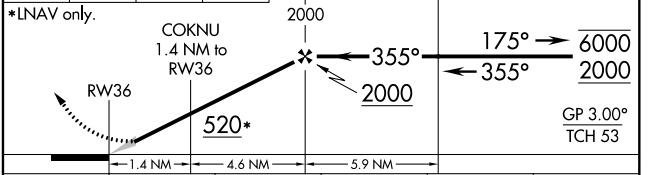
RNP APCH.	<p>For uncompensated Baro-VNAV systems, LNAV/VNAV NA below -1°C or above 54°C. For inop ALS, increase LPV Cat E visibility to RVR 4000, LNAV/VNAV all Cats visibility to RVR 4500 and LNAV Cat E visibility to RVR 6000. # RVR 1800 authorized with use of FD or AP or HUD to DA.</p>	MALS R	MISSED APPROACH: Climb to 2000 direct FEKEL and on track 304° to ATHIS and hold.
-----------	---	--------	--

ATIS 126.8	CORPUS APP CON 120.9 348.725	CORPUS TOWER 119.4 257.8	GND CON 121.9 269.15	CLNC DEL 118.55
----------------------	--	------------------------------------	--------------------------------	---------------------------



ELEV 46	D	TDZE 40
---------	----------	---------

2000	FEKEL	ATHIS	OSOIE	HADON	4 NM Holding Pattern
↑	✧	tr 304°	✧	✧	



CATEGORY	A	B	C	D	E
LPV DA #		240/24	200 (200-1/2)		
LNAV/VNAV DA		356/24	316 (400-1/2)		
LNAV MDA	440/24	400 (400-1/2)	440/35	400 (400-3/4)	
C CIRCLING	500-1 454 (500-1)	580-1 534 (600-1)	820-2 1/4 774 (800-2 1/4)	820-2 1/2 774 (800-2 1/2)	820-2 3/4 774 (800-2 3/4)

SC-3, 15 JUL 2021 to 12 AUG 2021

SC-3, 15 JUL 2021 to 12 AUG 2021