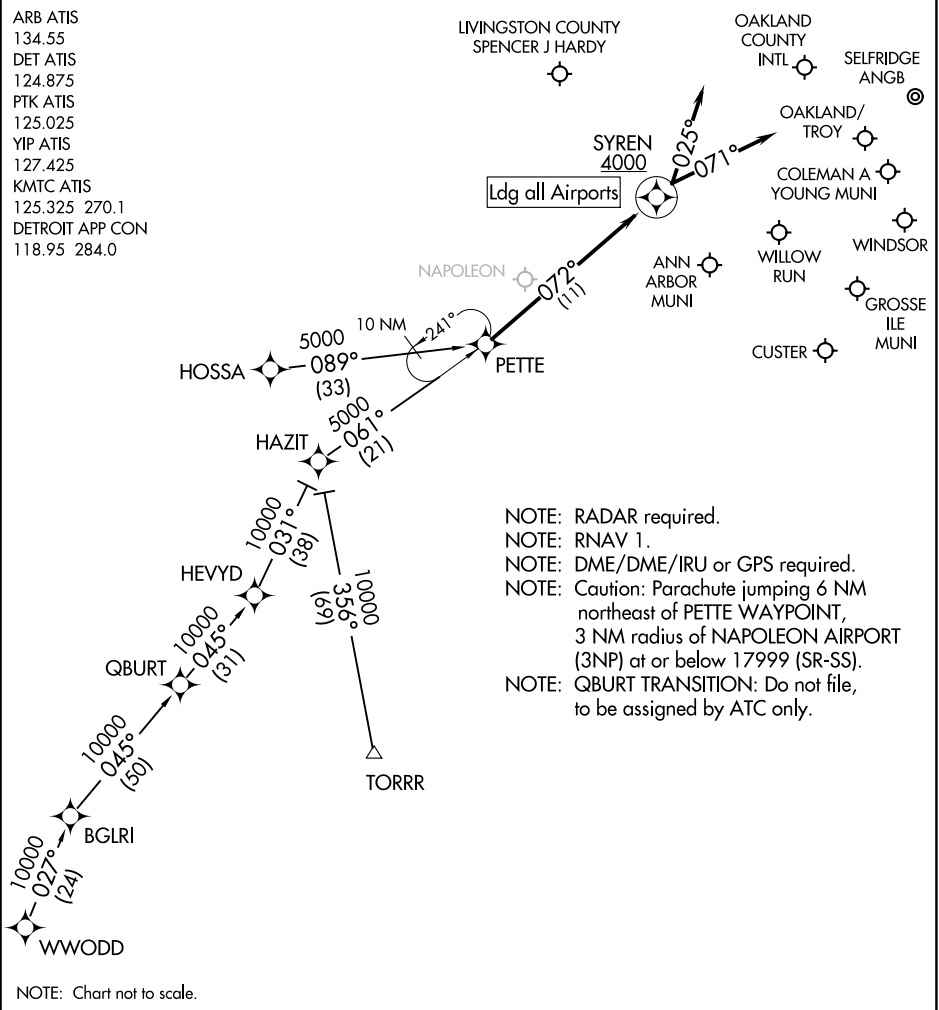


# PETTE TWO ARRIVAL (RNAV)

PONTIAC, MICHIGAN

ARB ATIS  
134.55  
DET ATIS  
124.875  
PTK ATIS  
125.025  
YIP ATIS  
127.425  
KMTC ATIS  
125.325 270.1  
DETROIT APP CON  
118.95 284.0



- NOTE: RADAR required.
- NOTE: RNAV 1.
- NOTE: DME/DME/IRU or GPS required.
- NOTE: Caution: Parachute jumping 6 NM northeast of PETTE WAYPOINT, 3 NM radius of NAPOLEON AIRPORT (3NP) at or below 17999 (SR-SS).
- NOTE: QBURT TRANSITION: Do not file, to be assigned by ATC only.

NOTE: Chart not to scale.

## ARRIVAL ROUTE DESCRIPTION

- HOSSA TRANSITION (HOSSA.PETTE2):
- QBURT TRANSITION (QBURT.PETTE2):
- TORRR TRANSITION (TORRR.PETTE2):
- WWODD TRANSITION (WWODD.PETTE2):

LANDING CYQG, KONZ, KARB, KYIP, KTF, KDET: From PETTE on track 072° to cross SYREN at or above 4000, then on track 071°. Expect RADAR vectors to final approach course.

LANDING KPTK, KMTC, KOZW, KYLL: From PETTE on track 072° to cross SYREN at or above 4000, then on track 025°. Expect RADAR vectors to final approach course.

# PETTE TWO ARRIVAL (RNAV)

PONTIAC, MICHIGAN

EC-1, 15 JUL 2021 to 12 AUG 2021

EC-1, 15 JUL 2021 to 12 AUG 2021