

LOC I-OCF 111.5	APP CRS 004°	Rwy Idg 6347
		TDZE 80
		Apt Elev 90

ILS or LOC/DME RWY 36

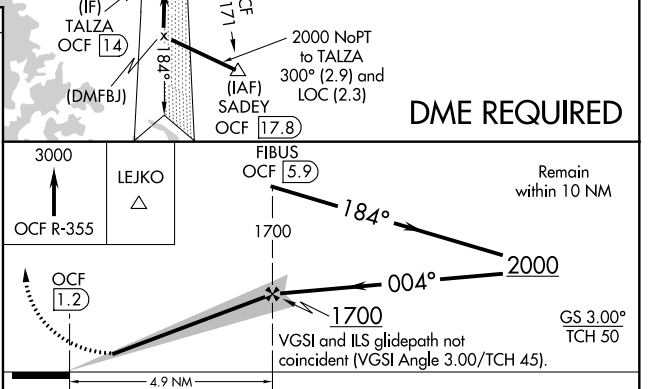
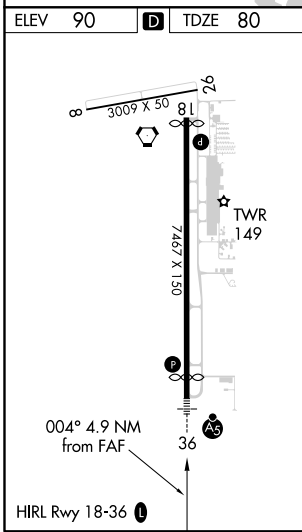
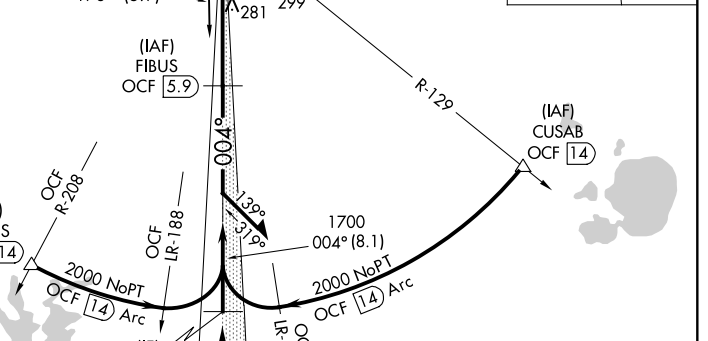
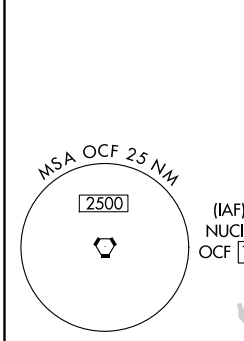
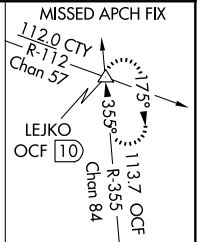
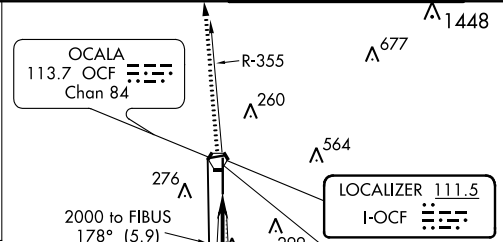
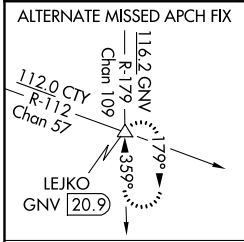
OCALA INTL-JIM TAYLOR FLD (OCF)

▼ DME from OCF VORTAC. Simultaneous reception of I-OCF and OCF DME required.
▲ When local altimeter setting not received, use Gainesville altimeter setting: Increase S-ILS 36 DA to 361 feet and all MDAs 100 feet; increase S-LOC 36 Cats C/D visibility ¼ SM and Circling Cat C visibility ½ SM and Cat D visibility ¼ SM. Inop table does not apply to S-ILS 36 all Cats when using local altimeter setting. For inop MALSR, increase S-LOC 36 Cats A and B visibility to 1 mile. For inop MALSR when using Gainesville altimeter setting, increase S-LOC 36 Cats A and B visibility to 1 mile.



MISSED APPROACH:
 Climb to 3000 via OCF VORTAC R-355 to LEJKO INT/OCF VORTAC 10 DME and hold continue climb-in-hold to 3000.

ATIS 128.125	JACKSONVILLE APP CON 118.6 251.15	OCALA TOWER ★ 119.25 (CTAF) 0	GND CON 121.4
------------------------	---	---	-------------------------



CATEGORY	A	B	C	D
S-ILS 36		280-¾	200 (200-¾)	
S-LOC 36		540-¾	460 (500-¾)	540-1 460 (500-1)
CIRCLING	600-1	510 (600-1)	760-1¾ 670 (700-1¾)	920-2¾ 830 (900-2¾)

SE-3, 15 JUL 2021 to 12 AUG 2021

SE-3, 15 JUL 2021 to 12 AUG 2021