

VORTAC OCF 113.7 Chan 84	APP CRS 354°	Rwy Idg 6347 TDZE 80 Apt Elev 90
--	------------------------	---

VOR RWY 36

OCALA INTL-JIM TAYLOR FLD (OCF)

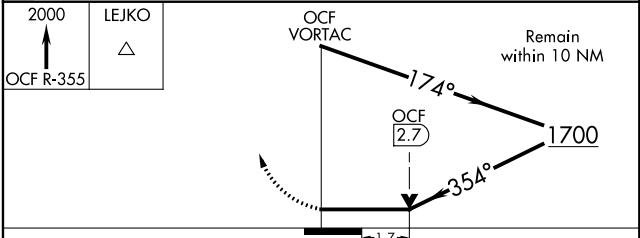
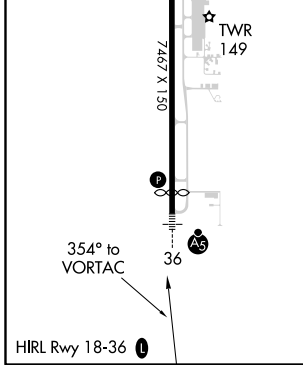
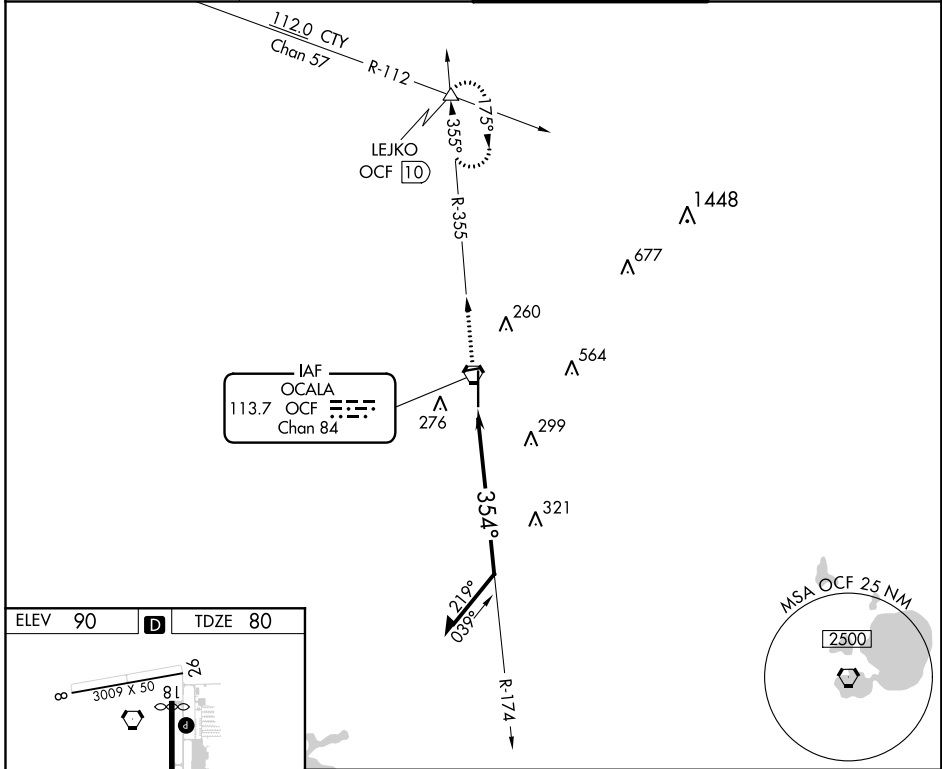
⚠ When local altimeter setting not received, use Gainesville altimeter setting and increase all MDA 100 feet; increase S-36 Cats C/D and and Circling Cat D visibilities ¼ SM and Circling Cat C visibility ½ SM. For inop MALSR, increase S-36 Cats A and B visibility to 1 mile. For inop MALSR when using Gainesville altimeter setting, increase S-36 Cats A and B visibility to 1 mile. VDP NA when using Gainesville altimeter setting.

MALSR



MISSED APPROACH: Climb to 2000 via OCF VORTAC R-355 to LEJKO INT/OCF 10 DME and hold.

ATIS 128.125	JACKSONVILLE APP CON 118.6 251.15	OCALA TOWER ★ 119.25 (CTAF) 0	GND CON 121.4
------------------------	---	---	-------------------------



CATEGORY	A	B	C	D
S-36	640-¾ 560 (600-¾)	640-1 560 (600-1)	640-1 560 (600-1)	640-1¼ 560 (600-1¼)
CIRCLING	640-1 550 (600-1)	640-1 550 (600-1)	760-1¾ 670 (700-1¾)	920-2¾ 830 (900-2¾)

SE-3, 15 JUL 2021 to 12 AUG 2021

SE-3, 15 JUL 2021 to 12 AUG 2021