

RNAV (GPS) RWY 9

HENDERSON CITY-COUNTY (E.H.R.)

WAAS CH 97709 W09A	APP CRS 089°	Rwy Idg TDZE Apt Elev	5503 385 387
--	------------------------	-----------------------------	---

RNP APCH.

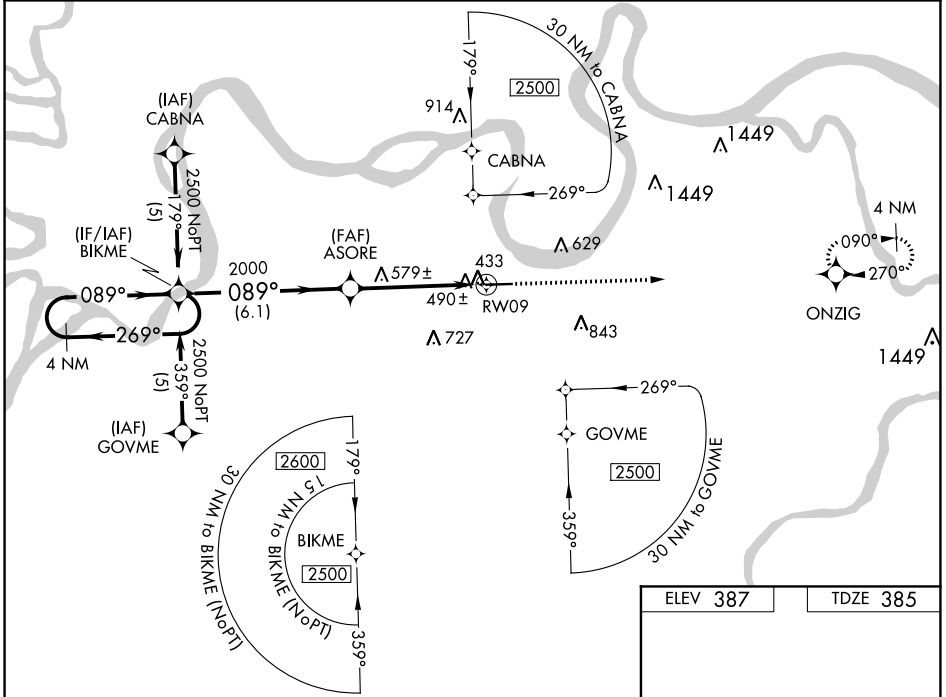
⚠ For uncompensated Baro-VNAV systems, LNAV/VNAV NA below -15°C or above 48° C.
⚠ Rwy 9 helicopter visibility reduction below 3/4 SM NA. Baro-VNAV and VDP NA when using Evansville altimeter setting. When local altimeter setting not received, use Evansville climeter setting and increase all DA 41 feet and all MDA 60 feet and LPV all Cats, LNAV/VNAV all Cats and LNAV Cats C/D visibilities 1/4 mile.

MISSED APPROACH:
Climb to 2500 direct
ONZIG and hold.

AWOS-3PT
118.85

EVANSVILLE APP CON *
124.025 257.8

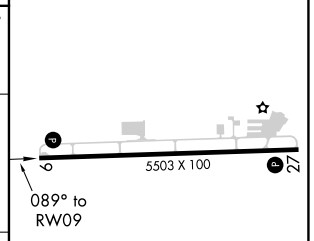
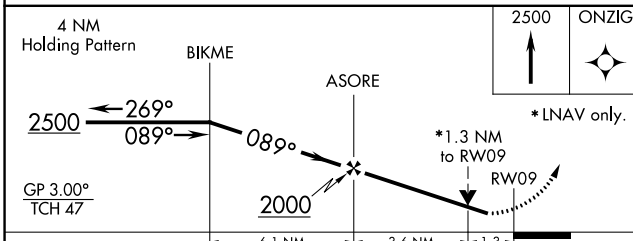
UNICOM
122.8 (CTAF) **0**



SE-1, 15 JUL 2021 to 12 AUG 2021

SE-1, 15 JUL 2021 to 12 AUG 2021

ELEV 387	TDZE 385
----------	----------



CATEGORY	A	B	C	D
LPV DA	694-1 309 (400-1)			
LNAV/VNAV DA	774-1 1/4 389 (400-1 1/4)			
LNAV MDA	840-1 455 (500-1)	840-1 3/8 455 (500-1 3/8)	840-1 1/2 455 (500-1 1/2)	840-1 1/2 455 (500-1 1/2)

REIL Rwy 9 and 27 **0**
MIRL Rwy 9-27 **0**