

HENDERSON, KENTUCKY

AL-5059 (FAA)

21140

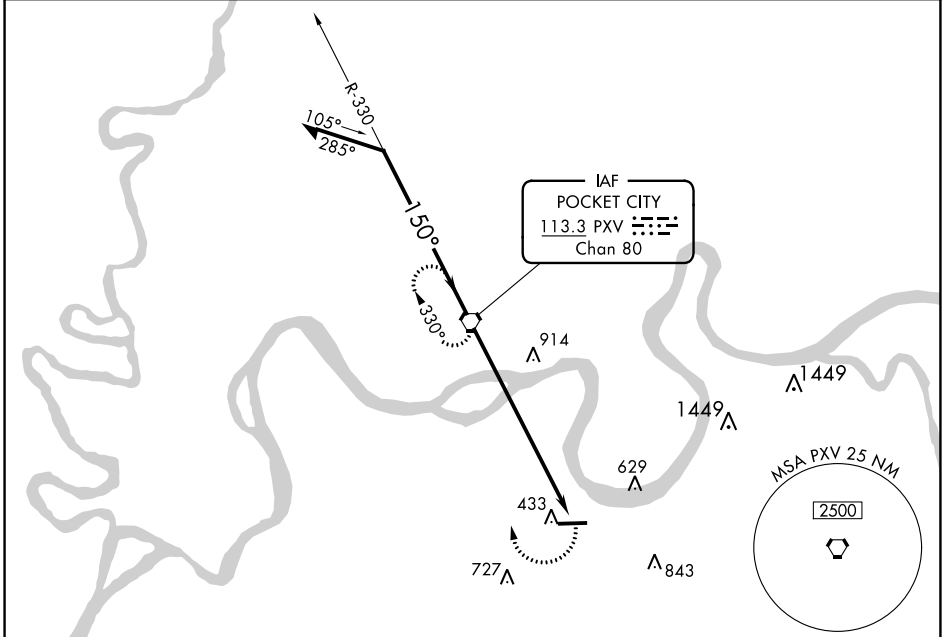
VORTAC PXV <b>113.3</b> Chan <b>80</b>	APP CRS <b>150°</b>	Rwy Idg TDZE Apt Elev	<b>N/A</b> <b>N/A</b> <b>387</b>
--	------------------------	-----------------------------	--

**VOR-A**

HENDERSON CITY-COUNTY (EHR)

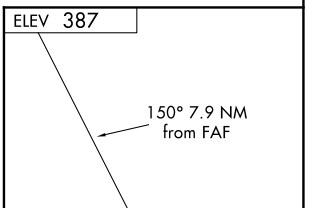
<p><b>▽</b> NA</p> <p>When local altimeter setting not received, use Evansville altimeter setting and increase all MDAs 80 feet, and increase Circling Cats C/D visibility ¼ SM.</p>	<p>MISSED APPROACH: Climbing right turn to 2100 direct PXV VORTAC and hold.</p>
--	---

<p>AWOS-3PT <b>118.85</b></p>	<p>EVANSVILLE APP CON ★ <b>124.025 257.8</b></p>	<p>UNICOM <b>122.8</b> (CTAF) <b>0</b></p>
-----------------------------------	--	--



SE-1, 15 JUL 2021 to 12 AUG 2021

SE-1, 15 JUL 2021 to 12 AUG 2021



CATEGORY	A	B	C	D
	920-1	533 (600-1)	1040-1¾ 653 (700-1¾)	1200-2¾ 813 (900-2¾)

ELEV 387				
150° 7.9 NM from FAF				
REIL Rwys 9 and 27 <b>0</b>				
MIRL Rwy 9-27 <b>0</b>				

CIRCLING	FAF to MAP 7.9 NM					
	Knots	60	90	120	150	180
	Min:Seq	7:54	5:16	3:57	3:10	2:38

HENDERSON, KENTUCKY  
Amdt 10A 20MAY21

37°48'N-87°41'W

HENDERSON CITY-COUNTY (EHR)

**VOR-A**