

MERIDIAN, MISSISSIPPI

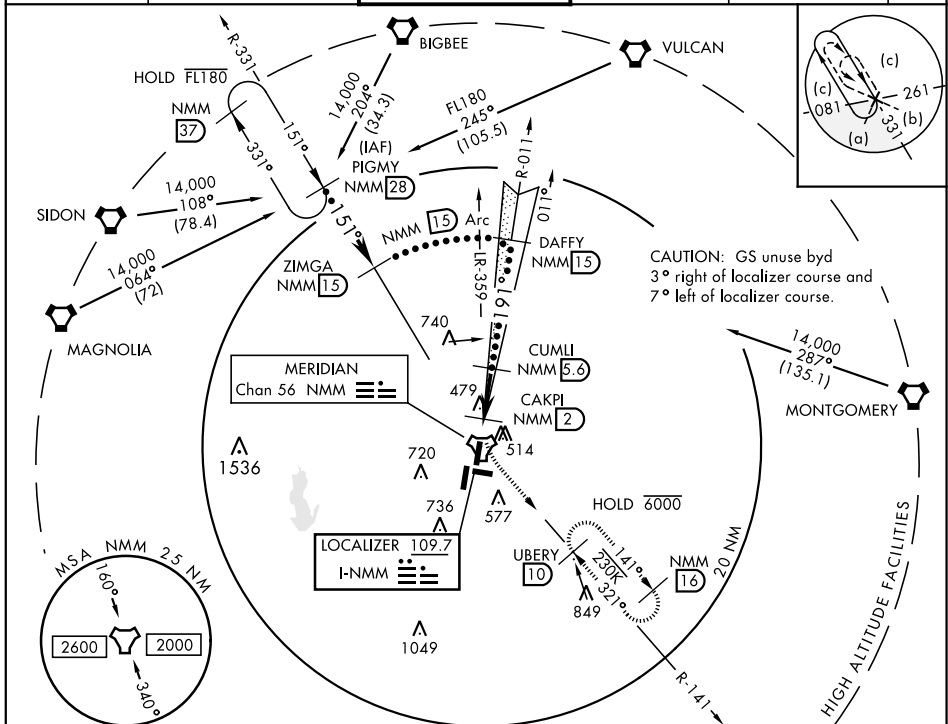
HI-ILS Z or LOC/DME Z RWY 19L

LOC I-NMM 109.7	APCH CRS 191°	Rwy Ldg TDZE Arprt Elev 8001 316 316	AL-5079 [USN]	MERIDIAN NAS (MC CAIN FIELD) (KNMM)
---------------------------	-------------------------	--	---------------	-------------------------------------

*When ALS inop, increase vis to ¾ mile.
 **When ALS inop, increase vis to 1½ miles.

 MISSED APPROACH: Climb to 800 then climbing left turn to 2100 intercept NMM R-141 to UBERY and hold.

ATIS ★ 290.525	MERIDIAN APP CON 120.95 276.4	NAVY MC CAIN TOWER ★ 126.2 340.2	GND CON 336.4	CLNC DEL 301.0	ASR/ PAR
--------------------------	---	--	-------------------------	--------------------------	-------------



SC-4, 15 JUL 2021 to 12 AUG 2021

SC-4, 15 JUL 2021 to 12 AUG 2021

EMERG SAFE ALT 100 NM 3700

CATEGORY	C	D	E
S-ILS 19L *	516-½	200	(200-½)
S-LOC 19L**	700-⅝	384	(400-⅝)
CIRCLING	840-1½ 524 (600-1½)	880-2 564 (600-2)	1080-2¾ 764 (800-2¾)

HIRL all Rwy
Wave-Off Lgt Rwy 1L, 19L

MERIDIAN, MISSISSIPPI 32° 33' N - 88° 33' W MERIDIAN NAS (MC CAIN FIELD) (KNMM)

HI-ILS Z or LOC/DME Z RWY 19L

