

MERIDIAN, MISSISSIPPI

ILS Y or LOC/DME Y RWY 19L

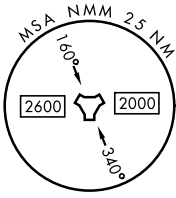
LOC I-NMM 109.7	APCH CRS 191°	Rwy ldg TDZE Arprt Elev 8001 316 316
---------------------------	-------------------------	--------------------------------------------------------------------------

AL-5079 [USN]

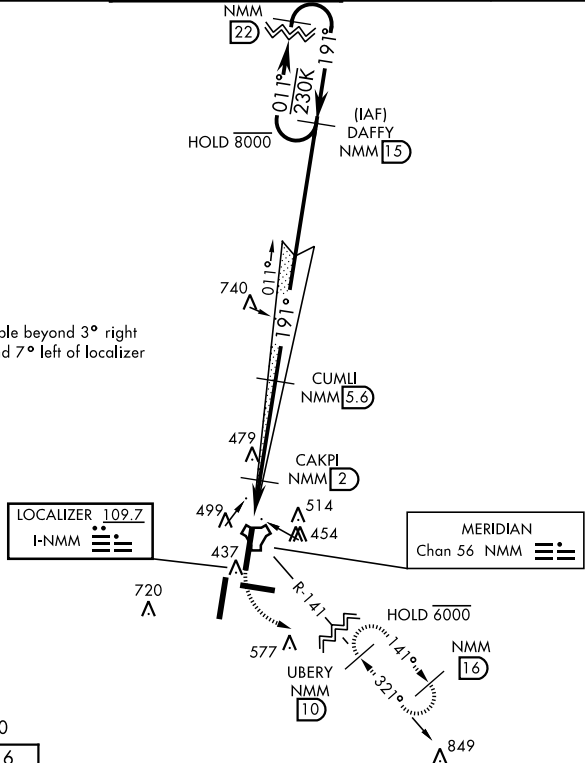
MERIDIAN NAS (MC CAIN FIELD) (KNMM)

RADAR required.		MALSR 	MISSED APPROACH: Climb to 800, then climbing left turn to 2100 to intercept NMM R-141 to UBERY and hold.		
* When ALS inop, increase vis to 3/4 mile. ** When ALS inop, increase CAT AB vis to 1 mile, CAT CD vis to 1 1/8 miles.					

ATIS ★ 290.525	MERIDIAN APP CON 120.95 276.4	NAVY MC CAIN TOWER ★ 126.2 340.2	GND CON 336.4	CLNC DEL 301.0	ASR/PAR
--------------------------	-----------------------------------------	--------------------------------------------	-------------------------	--------------------------	---------



CAUTION: GS unusable beyond 3° right of localizer course and 7° left of localizer course.



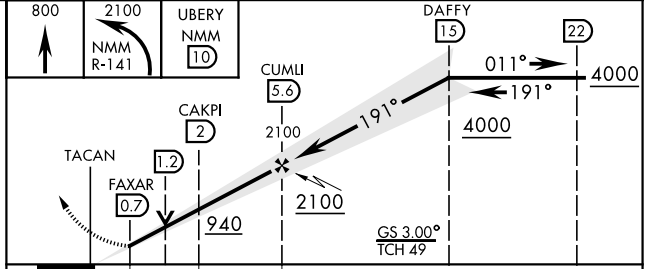
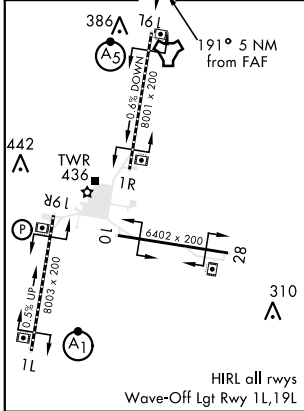
1544
Λ

LOCALIZER 109.7
I-NMM

MERIDIAN
Chan 56 NMM

EMERG SAFE ALT 100 NM 3700

ELEV 316	TDZE 316
----------	----------



CATEGORY	A	B	C	D
S-ILS 19L *	516-1/2		200	(200-1/2)
S-LOC 19L **	700-1/2	384 (400-1/2)	700-5/8	384 (400-5/8)
CIRCLING	840-1	524 (600-1)	840-1 1/2	880-2
			524 (600-1 1/2)	564 (600-2)

MERIDIAN, MISSISSIPPI
Amdt 3 25MAR21

32°33'N-88°33'W

MERIDIAN NAS (MC CAIN FIELD) (KNMM)

ILS Y or LOC/DME Y RWY 19L

SC-4, 15 JUL 2021 to 12 AUG 2021

SC-4, 15 JUL 2021 to 12 AUG 2021