

MERIDIAN, MISSISSIPPI

RNAV (GPS) RWY 19L

APCH CRS	Rwy Idg	8001
191°	TDZE	316
	Arpt Elev	316

AL-5079 (USN)

MERIDIAN NAS (MC CAIN FLD) (KNMM)

AS MISSED APPROACH: Climb to 2100 direct RUCKS and hold.
 * When ALS inop, increase CAT AB vis to 1 mile, increase CAT CDE to 1 3/8 miles.
 ** When ALS inop, increase vis to 1 3/8 miles.

ATIS*	APP CON	MC CAIN TOWER*	MC CAIN GND CON	CLNC DEL	ASR/PAR
290.525	119.2 348.7 E 379.275 N 120.5 269.325 S 120.95 276.4 W	126.2 340.2 RWY 01L, 19L AND 28 126.2 360.2 RWY 01R, 19R AND 10	336.4	301.0	

DME/DME RNP-0.3 NA

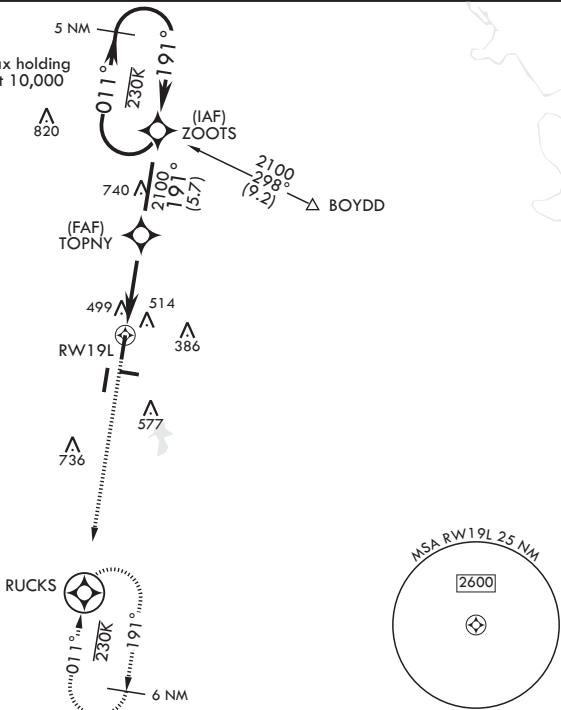
For uncompensated Baro-VNAV systems, LNAV/VNAV NA below -15°C (4°F) or above 41°C (107°F).

719

1536

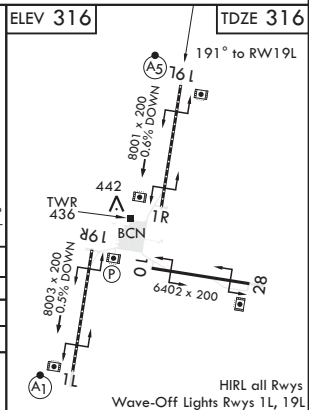
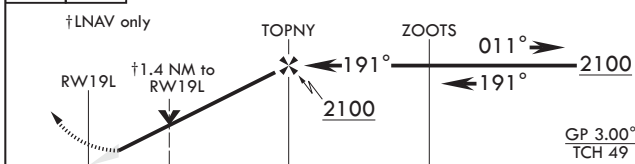
MERIDIAN MEI

RUCKS



EMERG SAFE ALT 100 NM 3700

2100	RUCKS	5 NM holding pattern	ELEV 316	TDZE 316
------	-------	----------------------	----------	----------



CATEGORY	A	B	C	D	E
LNAV/VNAV DA**	800-1		484	(500-1)	
LNAV MDA*	800-1/2	484 (500-1/2)	800-1	484	(500-1)
CIRCLING	840-1	524 (600-1)	840-1 1/2 524 (600-1 1/2)	880-2 564 (600-2)	1080-2 3/4 764 (800-2 3/4)

MERIDIAN, MISSISSIPPI

32°33'N - 88°33'W

MERIDIAN NAS (MC CAIN FLD) (KNMM)

Amdt 3 26MAR20

RNAV (GPS) RWY 19L

SC-4, 15 JUL 2021 to 12 AUG 2021

SC-4, 15 JUL 2021 to 12 AUG 2021

HIRL all Rwy's
Wave-Off Lights Rwy's 1L, 19L