

TACAN Y RWY 19L

TACAN NMM Chan 56	APCH CRS 181°	Rwy Idg TDZE 8001 316 Arprt Elev 316	AL-5079 [USN]	MERIDIAN NAS (MC CAIN FIELD) (KNMM)
--------------------------	----------------------	---	---------------	-------------------------------------

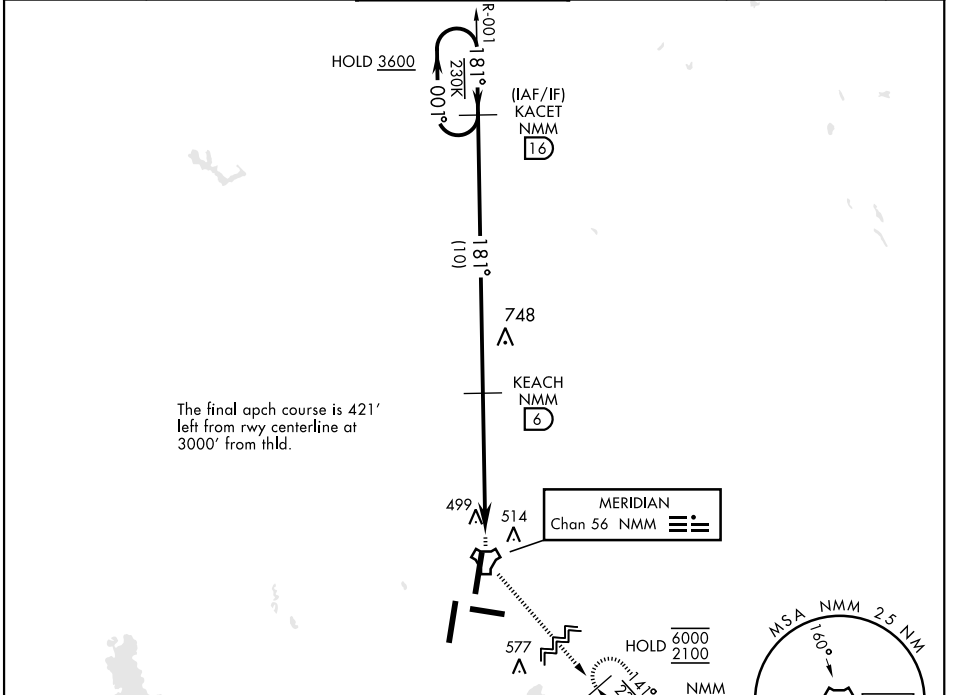
RADAR required.

MALSRL (A5)

MISSED APPROACH: Climb to 2100 direct NMM TACAN then via R-141 to UBERY and hold.

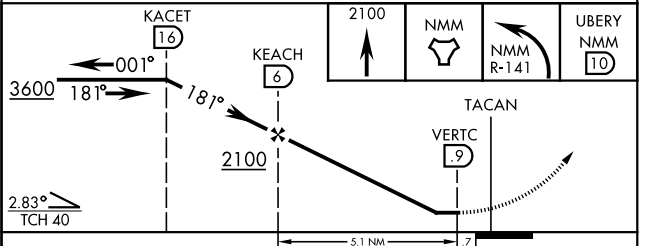
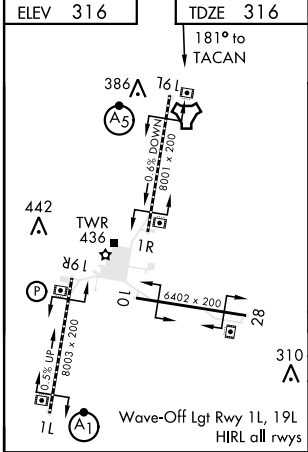
* When ALS inop, increase CAT AB vis to 1 mile; CDE vis to 1/8 miles.

ATIS ★ 290.525	MERIDIAN APP CON 120.95 276.4	NAVY MC CAIN TOWER ★ 126.2 340.2	GND CON 336.4	CLNC DEL 301.0	ASR/PAR
-----------------------	--------------------------------------	---	----------------------	-----------------------	---------



The final apch course is 421' left from rwy centerline at 3000' from thld.

EMERG SAFE ALT 100 NM 3700



CATEGORY	A	B	C	D	E
S-19L *	800-1/2 484	(500-1/2)	800-1	484	(500-1)
CIRCLING	840-1 524 (600-1)		840-1 1/2 524 (600-1 1/2)	880-2 564 (600-2)	1080-2 3/4 764 (800-2 3/4)

TACAN Y RWY 19L

SC-4, 15 JUL 2021 to 12 AUG 2021

SC-4, 15 JUL 2021 to 12 AUG 2021