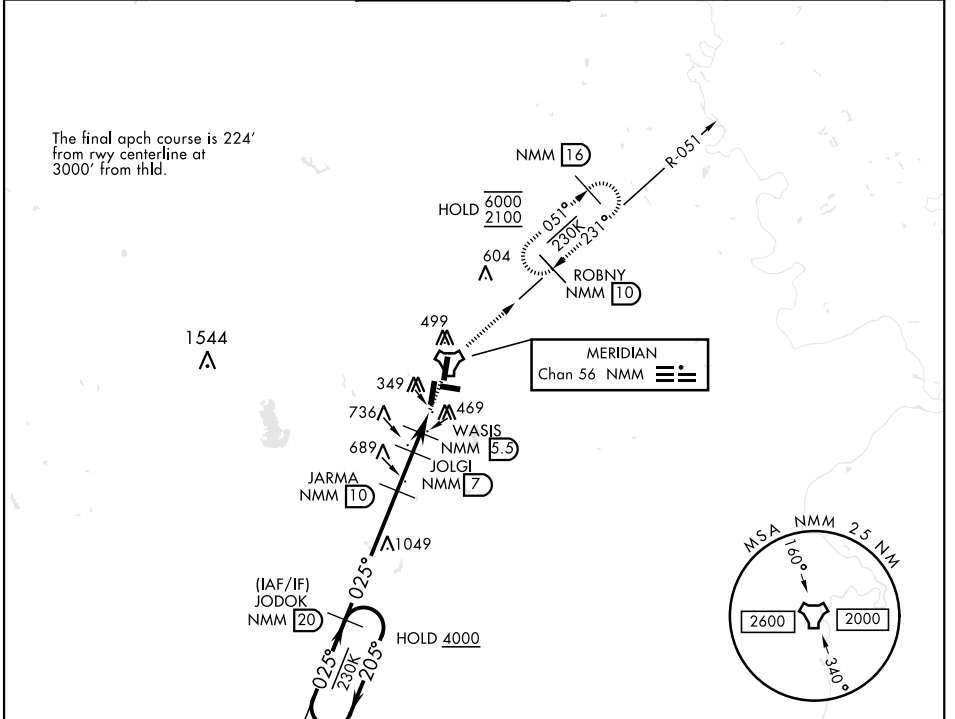


MERIDIAN, MISSISSIPPI

TACAN Y RWY 1L

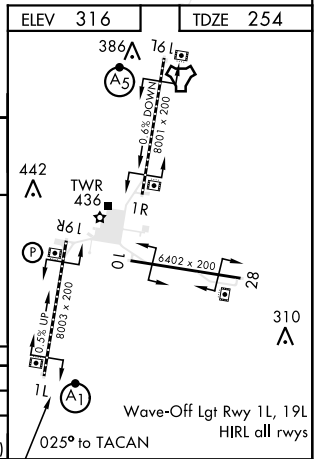
TACAN NMM Chan 56	APCH CRS 025°	Rwy Idg TDZE 254 Arprt Elev 316	AL-5079 [USN]	MERIDIAN NAS (MC CAIN FIELD) (KNMM)
RADAR required.			ALSF-1	MISSED APPROACH: Climb to 2100 direct NMM TACAN then via R-051 to ROBNY and hold.
▼ * When ALS inop, increase CAT AB vis to 1 mile; CAT CDE vis to 1½ miles.			(A1)	

ATIS ★ 290.525	MERIDIAN APP CON 120.95 276.4	NAVY MC CAIN TOWER ★ 126.2 340.2	GND CON 336.4	CLNC DEL 301.0	ASR/PAR
-----------------------	--------------------------------------	---	----------------------	-----------------------	---------



EMERG SAFE ALT 100 NM 3700

4000	205°	JODOK (20)	2100	NMM	NMM R-051
2500	025°	JARMA (10)	1500	JOLGI (7)	WASIS (5.3)
1040	025°	JOLGI (7)	1040	AGLEY (3.9)	TACAN



CATEGORY	A	B	C	D	E
S-1L *	760-½	506 (500-½)	760-1	506 (500-1)	
CIRCLING	840-1	524 (600-1)	840-1½ 524 (600-½)	880-2 564 (600-2)	1080-2¾ 764 (800-2¾)

MERIDIAN, MISSISSIPPI 32°33' N - 88°33' W MERIDIAN NAS (MC CAIN FIELD) (KNMM)

Amdt 2 25MAR21

TACAN Y RWY 1L

SC-4, 15 JUL 2021 to 12 AUG 2021

SC-4, 15 JUL 2021 to 12 AUG 2021