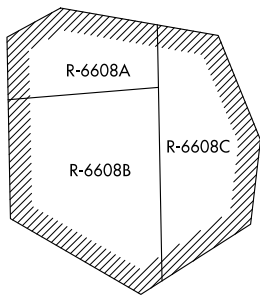


POTOMAC APP CON
128.525 306.925
D-ATIS
134.85

COINZ
Landing North Rws 1L/C/R, 30:
Expect RADAR vectors to final
approach course after COINZ.

6000



MIXNN
Landing South Rws 19L/C/R:
Expect RADAR vectors to final
approach course after MIXNN.

- NOTE: RADAR required.
- NOTE: RNAV 1.
- NOTE: DME/DME/IRU or GPS required.
- NOTE: Turbojet aircraft only.
- NOTE: ARTCC will issue landing direction assignment (North or South) and Potomac TRACON will issue runway assignments.

BARIN
6000

CAVLR
10000 250K

NOTE: Chart not to scale.

ARRIVAL ROUTE DESCRIPTION

DORRN TRANSITION (DORRN.CAVLR4)

THHMP TRANSITION (THHMP.CAVLR4)

TRSSK TRANSITION (TRSSK.CAVLR4)

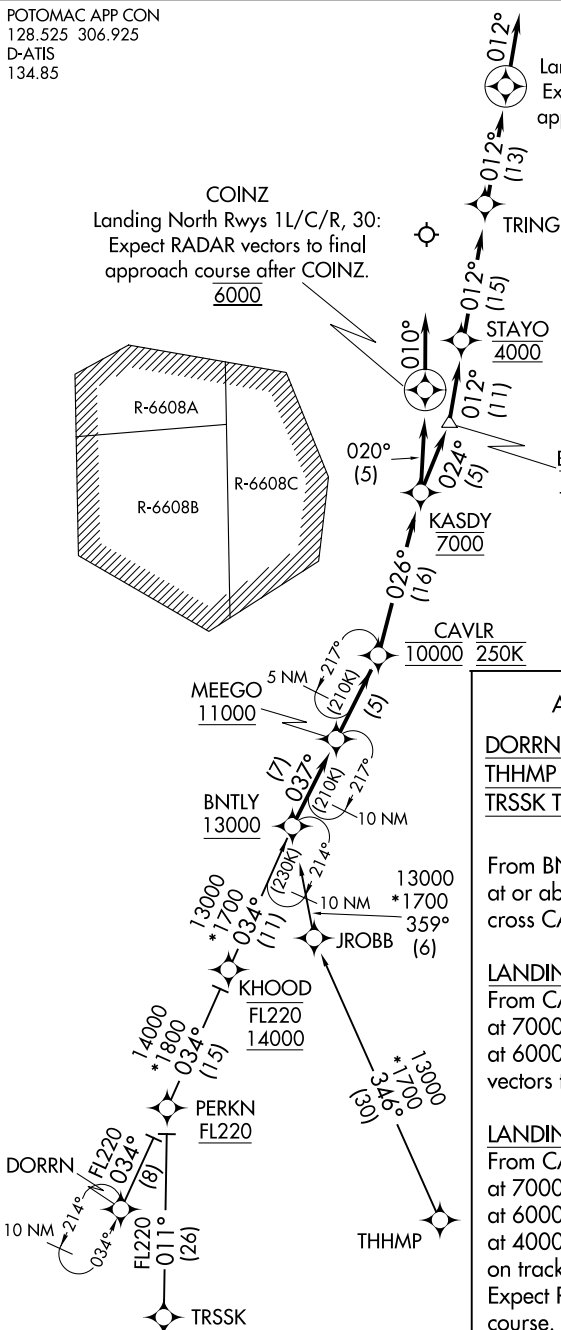
From BNTLY on track 037° to cross MEEGO at or above 11000, then on track 037° to cross CAVLR at 10000 and at 250K.

LANDING RUNWAYS 1L/C/R, 30:

From CAVLR on track 026° to cross KASDY at 7000, then on track 020° to cross COINZ at 6000, then on track 010°.

LANDING RUNWAYS 19L/C/R:

From CAVLR on track 026° to cross KASDY at 7000, then on track 024° to cross BARIN at 6000, then on track 012° to cross STAYO at 4000, then on track 012° to TRING, then on track 012° to MIXNN, then on track 012°.



NE-3, 15 JUL 2021 to 12 AUG 2021

NE-3, 15 JUL 2021 to 12 AUG 2021