

# CLTCH THREE DEPARTURE (RNAV)

NE-3, 15 JUL 2021 to 12 AUG 2021

- D-ATIS 134.85
- CINC DEL 135.7 317.8
- CPDLC
- GND.CON 121.9 317.8 (EAST)
- DULLES TOWER 121.625 348.6 (WEST)
- 120.1 317.8 [Rwy 1R/19L]
- 120.25 348.6 [Rwy 1C/19C]
- 134.425 348.6 [Rwys 1L/19R, 12/30]
- POTOMAC DEP CON 126.65 350.2

**TAKEOFF MINIMUMS:**  
 Rwys 1L/C/R, 19L/C/R, 30:  
 Standard with minimum climb  
 of 500' per NM to 820.



**TOP ALTITUDE:**  
3000

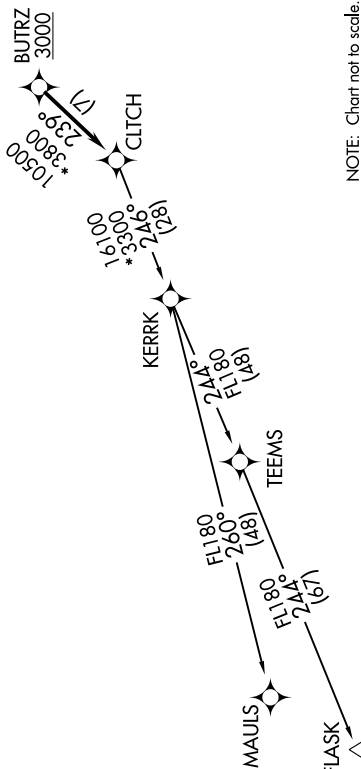
- NOTE: RNAV 1.
- NOTE: RADAR required.
- NOTE: DME/DME/IRU or GPS required.
- NOTE: Turbo-jets only.

## DEPARTURE ROUTE DESCRIPTION

**TAKEOFF RWY 1L/C/R, 19L/C/R, 30:** Climb on heading assigned by ATC, expect RADAR vectors to BUTRZ, then on track 239° to CLTCH, thence. . . .

. . . on assigned transition. Maintain 3000. Expect clearance to filed altitude within ten (10) minutes after departure.

FLASK TRANSITION (CLTCH3.FLASK)  
MAULS TRANSITION (CLTCH3.MAULS)



NOTE: Chart not to scale.

# CLTCH THREE DEPARTURE (RNAV)

(CLTCH3.CLTCH) 31DEC20

NE-3, 15 JUL 2021 to 12 AUG 2021