

LOC/DME I-SGC 110.1 Chan 38	APP CRS 191°	Rwy Idg 11500 TDZE 302 Apt Elev 313
---	------------------------	--

ILS RWY 19L (SA CAT II)

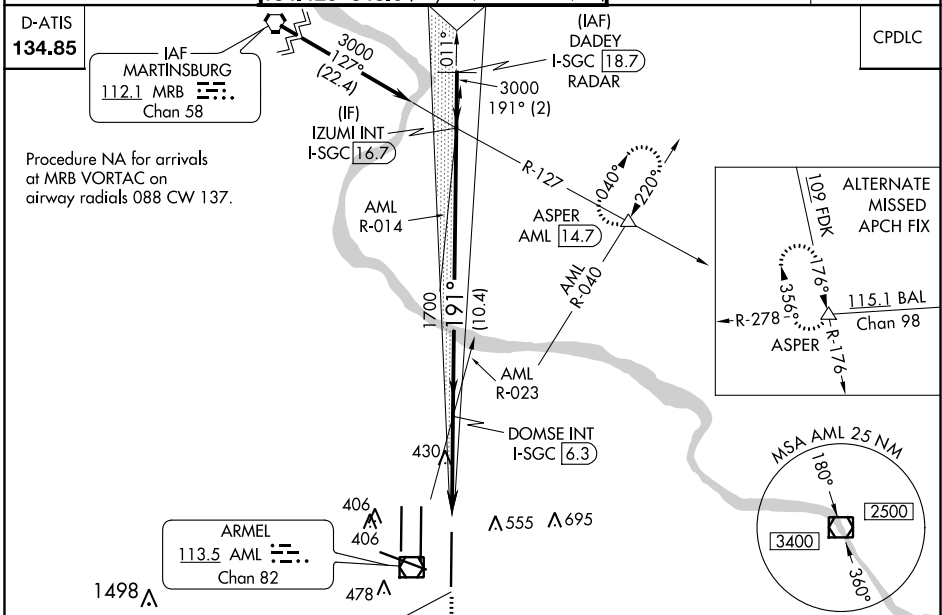
WASHINGTON DULLES INTL (IAD)

⚠ Simultaneous approach authorized with Rwy 19C or 19R.
Reduced lighting: Requires specific OPSPEC, MSPEC,
or LOA approval and use of Autoland or HUD to touchdown.

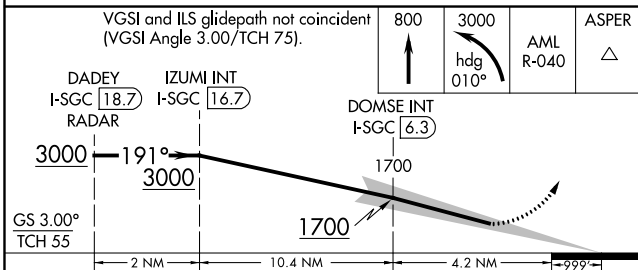
ALSF-2 **(A)**

MISSED APPROACH: Climb to 800 then climbing left turn to 3000 on heading 010° and AML VOR/DME R-040 to ASPER INT/AML 14.7 DME and hold.

POTOMAC APP CON 120.45 306.925 (241°-330°) 128.525 306.925 (091°-240°) 126.1 338.25 (331°-090°)	DULLES TOWER 120.1 317.8 (Rwy 1R/19L) 120.25 348.6 (Rwy 1C/19C) 134.425 348.6 (Rwys 1L/19R and 12/30)	GND CON 121.9 317.8 (EAST) 121.625 348.6 (WEST)	CLNC DEL 135.7 317.8
---	---	---	--------------------------------

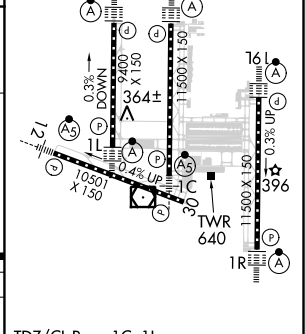


D-ATIS 134.85	CPDLC
-------------------------	-------



VGSI and ILS glidepath not coincident (VGSI Angle 3.00/TCH 75).	800	3000	AML R-040	ASPER
DADEY I-SGC (18.7) RADAR	IZUMI INT I-SGC (16.7)	DOMSE INT I-SGC (6.3)		
GS 3.00° TCH 55	2 NM	10.4 NM	4.2 NM	999'
CATEGORY	A	B	C	D
S-ILS 19L	RA 102/12 100 DA 402			

ELEV 313	D	TDZE 302
----------	---	----------



CATEGORY II ILS - SPECIAL AIRCREW & AIRCRAFT CERTIFICATION REQUIRED

TDZ/CL Rwys 1C, 1L, 1R, 12, 19C and 19R
REIL Rwy 30
HIRL all Rwys

NE-3, 15 JUL 2021 to 12 AUG 2021

NE-3, 15 JUL 2021 to 12 AUG 2021