

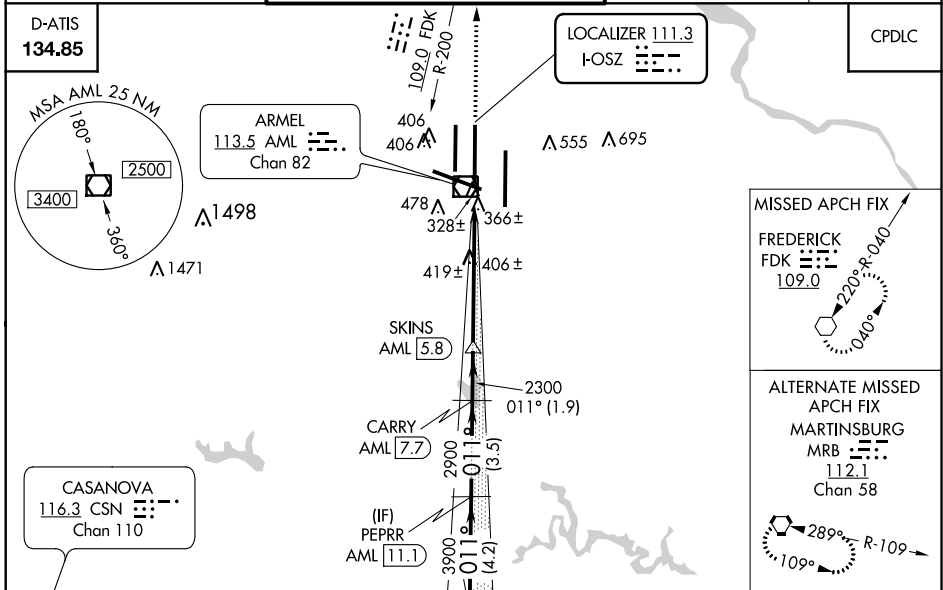
LOC I-OSZ <b>111.3</b>	APP CRS <b>011°</b>	Rwy ldg <b>11500</b> TDZE <b>286</b> Apt Elev <b>313</b>
---------------------------	------------------------	--

**ILS RWY 1C (SA CAT II)**  
WASHINGTON DULLES INTL (IAD)

**D** DME from AML VOR/DME. Simultaneous reception of I-OSZ and AML DME required.  
**A** Simultaneous approach authorized with ILS or LOC/DME Rwy 1L, ILS Rwy 1L (Cat II), ILS Rwy 1L (Cat III), ILS or LOC Rwy 1R, ILS Rwy 1R (Cat II), ILS Rwy 1R (Cat III).  
 Reduced lighting: Requires specific OPSPEC, MSPEC, or LOA approval and use of autoland or HUD to touchdown. DME required.

MALSR 	MISSED APPROACH: Climb to 3000 on heading 011° and FDK VOR R-200 to FDK VOR and hold.
-----------	---

POTOMAC APP CON <b>120.45 306.925</b> (241°-330°) <b>128.525 306.925</b> (091°-240°) <b>126.1 338.25</b> (331°-090°)	DULLES TOWER <b>120.1 317.8</b> (Rwy 1R/19L) <b>120.25 348.6</b> (Rwy 1C/19C) <b>134.425 348.6</b> (Rwys 1L/19R and 12/30)	GND CON <b>121.9 317.8</b> (EAST) <b>121.625 348.6</b> (WEST)	CLNC DEL <b>135.7 317.8</b>
---	---	---	--------------------------------

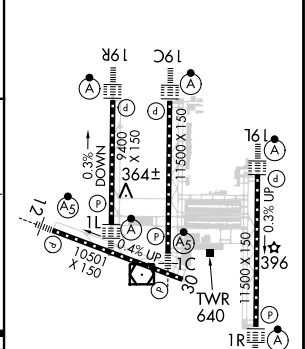
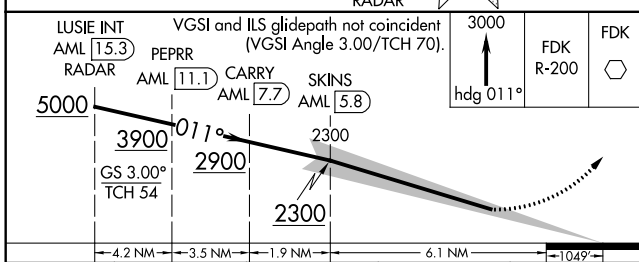


NE-3, 15 JUL 2021 to 12 AUG 2021

NE-3, 15 JUL 2021 to 12 AUG 2021

D-ATIS <b>134.85</b>	CPDLC
-------------------------	-------

ELEV 313	<b>D</b>	TDZE 286
----------	----------	----------



CATEGORY	A	B	C	D
S-ILS 1C		RA 104/12 100 DA 386		

**CATEGORY II ILS - SPECIAL AIRCREW & AIRCRAFT CERTIFICATION REQUIRED**

TDZ/CL Rwys 1C, 1L, 1R, 12, 19C and 19R  
 REIL Rwy 30  
 HIRL all Rwys