

LOC/DME I-HAD 110.1 Chan 38	APP CRS 011°	Rwy ldg 11500 TDZE 312 Apt Elev 313
--	------------------------	--

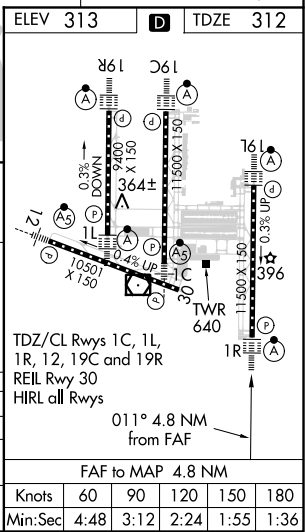
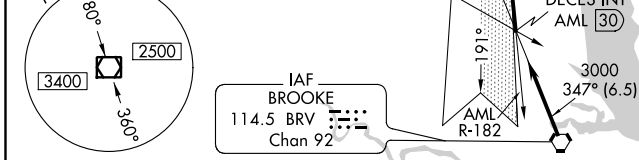
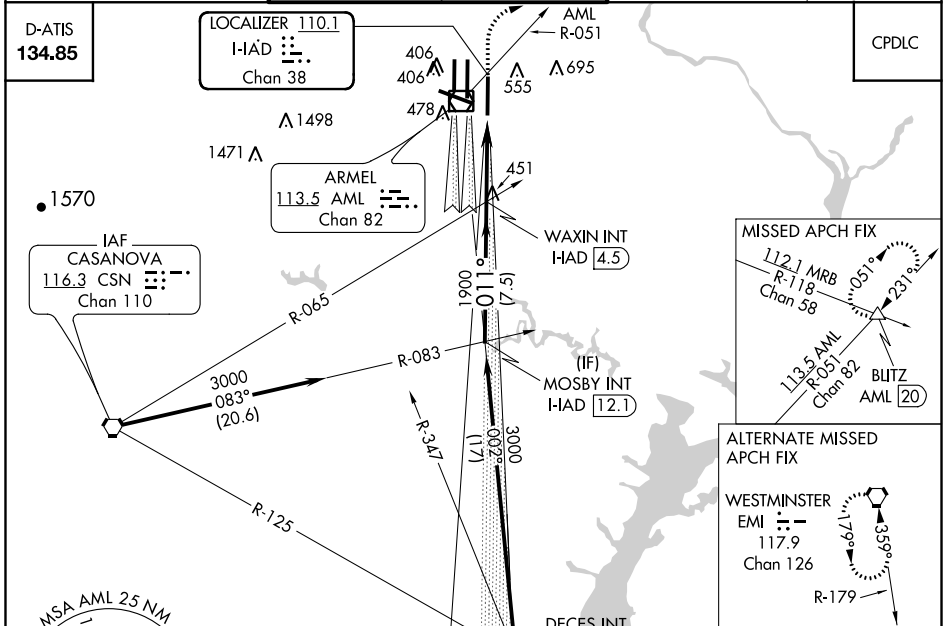
ILS or LOC RWY 1R

WASHINGTON DULLES INTL (IAD)

Simultaneous approach authorized with Rwy 1C or 1L.

ALSIF-2 MISSED APPROACH: Climb to 800 then climbing right turn to 3000 via heading 060° and AML VOR/DME R-051 to BLITZ INT/AML 20 DME and hold.

POTOMAC APP CON 120.45 306.925 (241°-330°) 128.525 306.925 (091°-240°) 126.1 338.25 (331°-090°)	DULLES TOWER 120.1 317.8 (Rwy 1R/19L) 120.25 348.6 (Rwy 1C/19C) 134.425 348.6 (Rwys 1L/19R and 12/30)	GND CON 121.9 317.8 (EAST) 121.625 348.6 (WEST)	CLNC DEL 135.7 317.8
---	---	---	--------------------------------



Procedure Turn NA	800	3000	AML R-051	BLITZ Δ
GS 3.00° TCH 53	3000	1900	I-HAD 0.9	I-HAD DME ANT.
CATEGORY	A	B	C	D
S-ILS 1R	512/18		200 (200-½)	
S-LOC 1R	760/24	448 (500-½)	760/40 448 (500-¾)	760/50 448 (500-1)
CIRCLING	940-1	627 (700-1)	940-1¾ 627 (700-1¾)	1060-2½ 747 (800-2½)

NE-3, 15 JUL 2021 to 12 AUG 2021

NE-3, 15 JUL 2021 to 12 AUG 2021