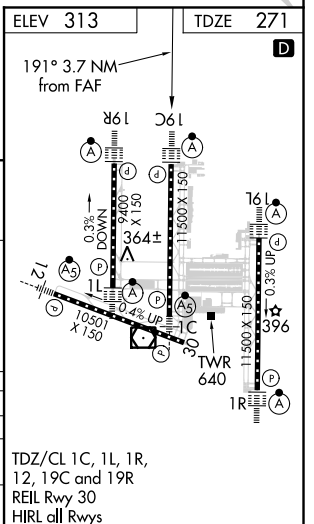
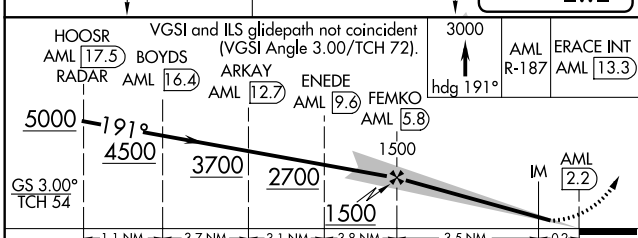
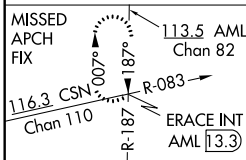
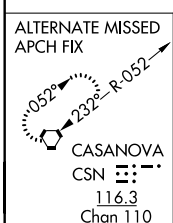
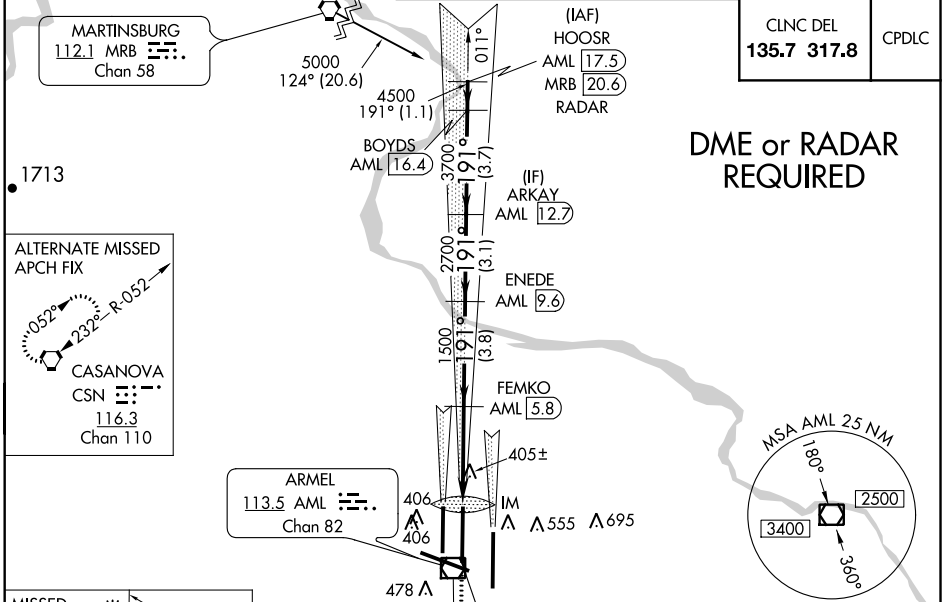


LOC I-DLX 111.3	APP CRS 191°	Rwy Idg 11089 TDZE 271 Apt Elev 313
---------------------------	------------------------	--

ILS or LOC/DME RWY 19C

WASHINGTON DULLES INTL (IAD)

⚠ DME from AML VOR/DME. Simultaneous reception of I-DLX and AML DME required. Simultaneous approach authorized with ILS or LOC Rwy 19L, ILS Rwy 19L (Cat II), ILS or LOC/DME Rwy 19R, ILS Rwy 19R (Cat II), ILS Rwy 19R (Cat III).	ALSF-2 	MISSED APPROACH: Climb to 3000 via heading 191° and AML VOR/DME R-187 to ERACE INT/AML 13.3 DME and hold.



CATEGORY	A	B	C	D
S-ILS 19C	471/18		200 (200-½)	
S-LOC 19C	660/24		389 (400-½)	660/40 389 (400-¾)
CIRCLING	940-1 627 (700-1)		940-1¾ 627 (700-1¾)	1060-2½ 747 (800-2½)

TDZ/CL 1C, 1L, 1R, 12, 19C and 19R
REIL Rwy 30
HIRL all Rwys

NE-3, 15 JUL 2021 to 12 AUG 2021

NE-3, 15 JUL 2021 to 12 AUG 2021