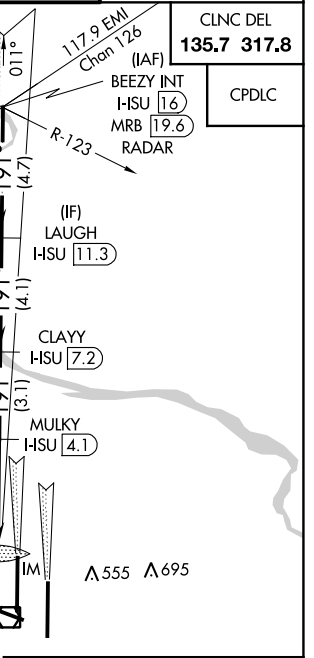
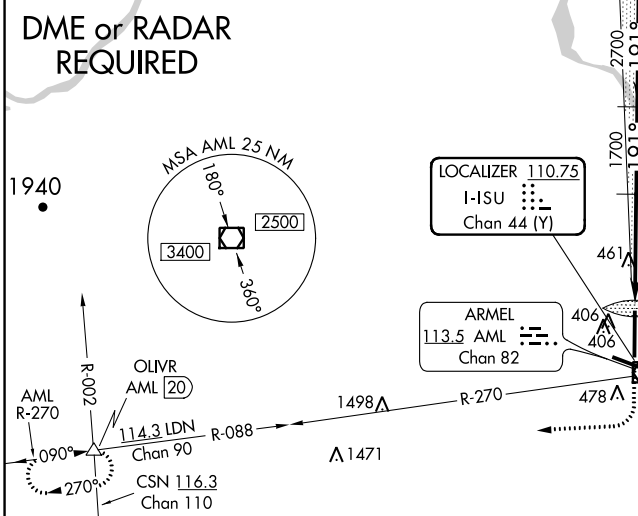
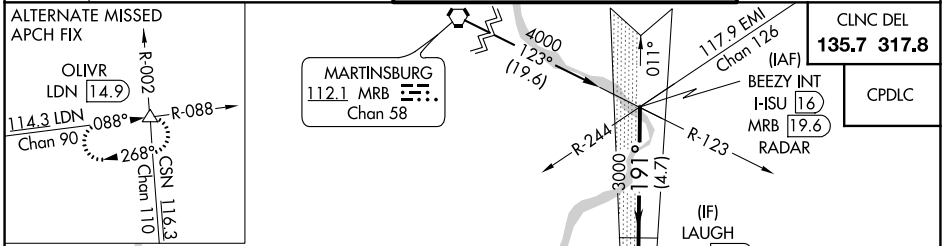


LOC/DME I-HSU 110.75 Chan 44 (Y)	APP CRS 191°	Rwy ldg 9400 TDZE 278 Apt Elev 313
--	------------------------	---

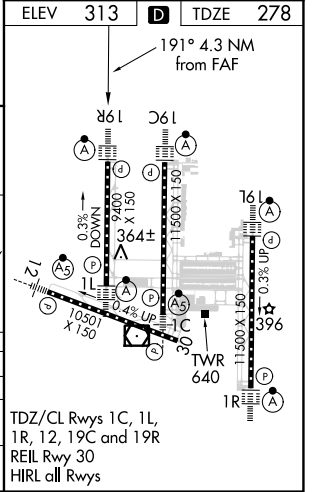
ILS or LOC/DME RWY 19R

WASHINGTON DULLES INTL (IAD)

<p>Simultaneous approach authorized with ILS or LOC/DME</p> <p>Rwy 19C, ILS Rwy 19C (Cat II), ILS Rwy 19C (Cat III), Rwy 19L.</p>	<p>ALSF-2</p> <p>MISSED APPROACH: Climb to 800 then climbing right turn to 5000 via AML VOR/DME R-270 to OLIVR INT/AML 20 DME and hold, continue climb-in-hold to 5000.</p>	
<p>D-ATIS 134.85</p> <p>POTOMAC APP CON 120.45 306.925 (241°-330°) 128.525 306.925 (091°-240°) 126.1 338.25 (331°-090°)</p>	<p>DULLES TOWER 120.1 317.8 (Rwy 1R/19L) 120.25 348.6 (Rwy 1C/19C) 134.425 348.6 (Rwys 1L/19R and 12/30)</p>	<p>GND CON 121.9 317.8 (EAST) 121.625 348.6 (WEST)</p>



BEEZY INT H-SU 16 RADAR	VGS1 and ILS glidepath not coincident (VGS1 Angle 3.00/TCH 70).		800	5000	AML R-270	OLIVR
4000	191°	3000	2700	1700	1700	1700
GS 3.00° TCH 55	4.7 NM	4.1 NM	3.1 NM	3.1	1.1	0.1
CATEGORY	A	B	C	D		
S-ILS 19R	478/18		200 (200-½)	720/50		
S-LOC 19R	720/24	442 (500-½)	720/40 442 (500-¾)	720/50 442 (500-1)		
CIRCLING	940-1	627 (700-1)	940-1¾ 627 (700-1¾)	1060-2½ 747 (800-2½)		



NE-3, 15 JUL 2021 to 12 AUG 2021

NE-3, 15 JUL 2021 to 12 AUG 2021