


LOC I-OSZ 111.3	APP CRS 011°	Rwy ldg TDZE Apt Elev	11500 286 313
---------------------------	------------------------	-----------------------------	--

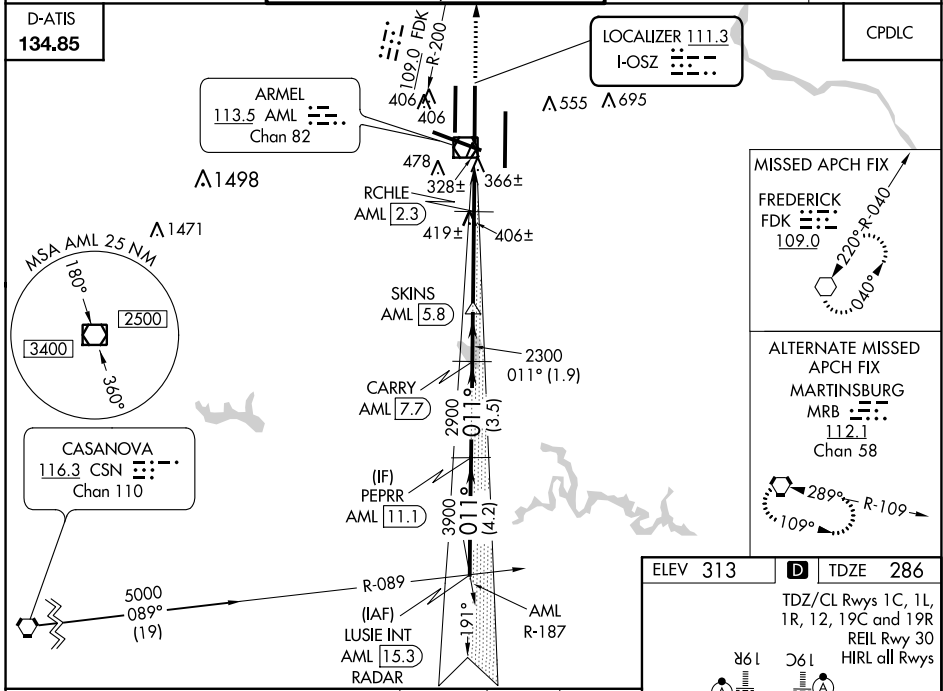
ILS or LOC/DME RWY 1C

WASHINGTON DULLES INTL (IAD)

⚠ DME from AML VOR/DME. Simultaneous reception of I-OSZ and AML DME required. Simultaneous approach authorized with ILS or LOC/DME Rwy 1L, ILS Rwy 1L (Cat II), ILS Rwy 1L (Cat III), ILS or LOC Rwy 1R, ILS Rwy 1R (Cat II), ILS Rwy 1R (Cat III). DME required. For Inoperative MALS R, increase S-LOC Cats C/D visibility to RVR 5000. **1800 RVR authorized with the use of FD or AP or HUD to DA.

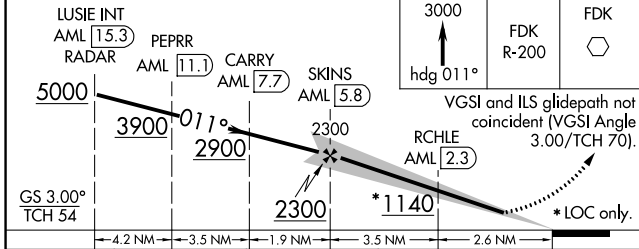
MALS R  MISSED APPROACH: Climb to 3000 on heading 011° and FDK VOR R-200 to FDK VOR and hold.

POTOMAC APP CON 120.45 306.925 (241°-330°) 128.525 306.925 (091°-240°) 126.1 338.25 (331°-090°)	DULLES TOWER 120.1 317.8 (Rwys 1R/19L) 120.25 348.6 (Rwy 1C/19C) 134.425 348.6 (Rwys 1L/19R and 12/30)	GND CON 121.9 317.8 (EAST) 121.625 348.6 (WEST)	CLNC DEL 135.7 317.8
---	--	---	--------------------------------



MISSED APCH FIX
FREDERICK FDK 109.0 (220° R-040, 040°)

ALTERNATE MISSED APCH FIX
MARTINSBURG MRB 112.1 (289° R-109, 109°) Chan 58



ELEV 313 | **TDZE 286**

TDZ/CL Rwys 1C, 1L, 1R, 12, 19C and 19R
REIL Rwy 30
HIRL all Rwys

011° 6.1 NM from FAF

FAF to MAP 6.1 NM

10501 X 150, **9400 X 150**, **1500 X 150**, **11500 X 150**

364±, **396**, **TWR 640**

0.3% UP, **0.4% UP**, **0.3% UP**

16L, **17L**, **18L**, **19L**, **19C**, **19R**, **12**, **11**, **10**, **9**, **8**, **7**, **6**, **5**, **4**, **3**, **2**, **1**

Knots	60	90	120	150	180
Min:Sec	6:06	4:04	3:03	2:26	2:02

CATEGORY	A	B	C	D
S-ILS 1C		** 486/24	200 (200-½)	
S-LOC 1C		620/24	334 (400-½)	620/40 334 (400-¾)
CIRCLING	940-1	627 (700-1)	940-1¼ 627 (700-1¾)	1060-2½ 747 (800-2½)

NE-3, 15 JUL 2021 to 12 AUG 2021

NE-3, 15 JUL 2021 to 12 AUG 2021