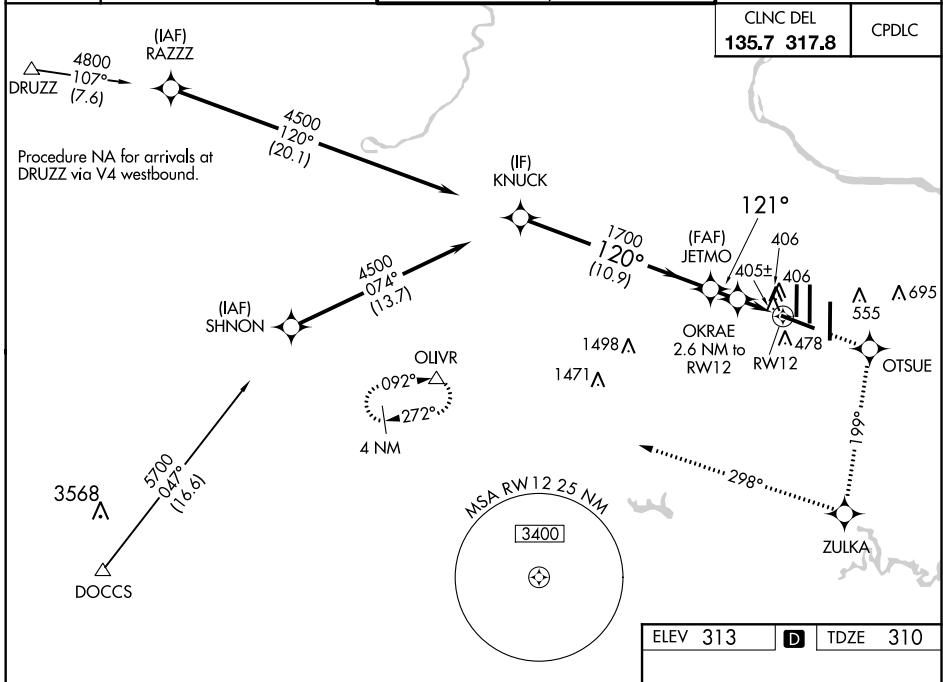


WAAS CH 86310 W12A	APP CRS 121°	Rwy Idg 10501 TDZE 310 Apt Elev 313
---------------------------------	------------------------	----------------------------------------------------------------

RNAV (GPS) RWY 12

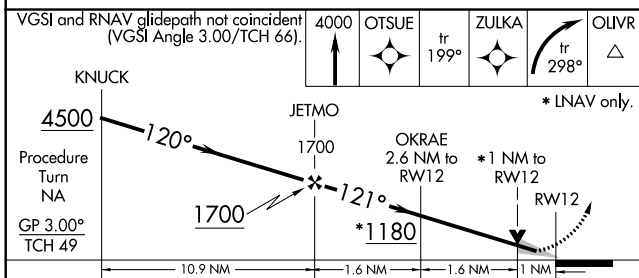
WASHINGTON DULLES INTL (IAD)

RNP APCH.		MALSR	MISSED APPROACH: Climb to 4000 direct OTSUE and via 199° track to ZULKA and right turn via 298° track to OLVR and hold.
▼ For inop MALSR, increase LNAV Cat D visibility to RVR 6000. ▲ For uncompensated Baro-VNAV systems, LNAV/VNAV NA below -15°C or above 48°C.			
D-ATIS 134.85	POTOMAC APP CON 120.45 306.925 (241°-330°) 128.525 306.925 (091°-240°) 126.1 338.25 (331°-090°)	DULLES TOWER 120.1 317.8 (Rwy 1R/19L) 120.25 348.6 (Rwy 1C/19C) 134.425 348.6 (Rwys 1L/19R and 12/30)	GND CON 121.9 317.8 (EAST) 121.625 348.6 (WEST)

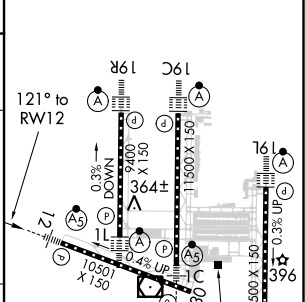


NE-3, 15 JUL 2021 to 12 AUG 2021

NE-3, 15 JUL 2021 to 12 AUG 2021



ELEV 313	D	TDZE 310
----------	----------	----------



CATEGORY	A	B	C	D
LPV DA		510/18	200 (200-½)	
LNAV/VNAV DA		737/50	427 (500-1)	
LNAV MDA		680/24	370 (400-½)	680/50 370 (400-1)
CIRCLING	940-1	627 (700-1)	940-1¾ 627 (700-1¾)	1060-2½ 747 (800-2½)

TDZ/CL Rwys 1C, 1L, 1R, 12, 19C and 19R
REIL Rwy 30
HIRL all Rwys