

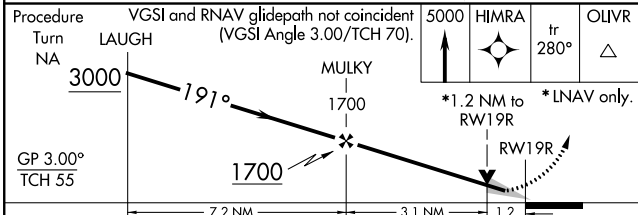
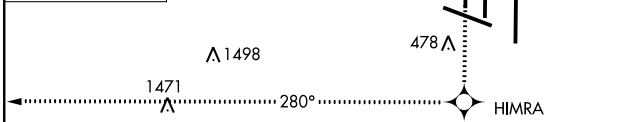
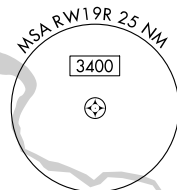
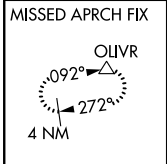
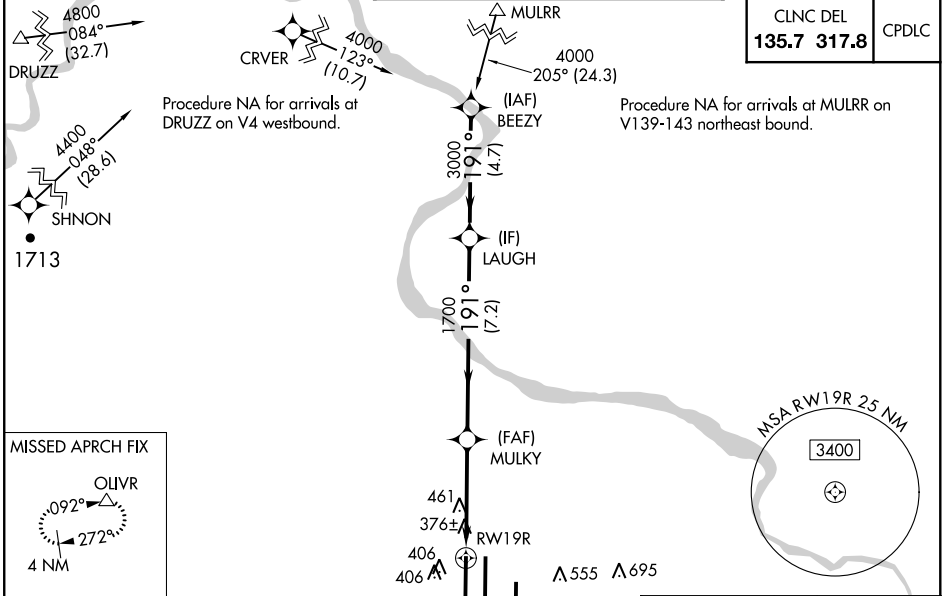
WAAS CH 86709 W19D	APP CRS 191°	Rwy Idg TDZE 278 Apt Elev 313	9400
--	------------------------	---	-------------

RNAV (GPS) RWY 19R

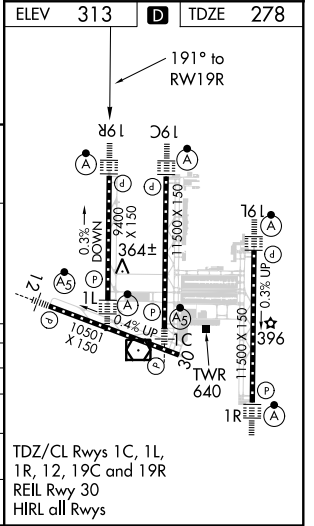
WASHINGTON DULLES INTL (IAD)

RNP APCH.	<p>For uncompensated Baro-VNAV systems, LNAV/VNAV NA below -15°C or above 48°C. Simultaneous approach authorized with ILS or LOC Rwy 19L, ILS Rwy 19L (Cat II). LNAV procedure NA during simultaneous operations. Use of FD or AP providing RNAV track guidance required during simultaneous operations.</p>	<p>ALSF-2</p>	<p>MISSED APPROACH: Climb to 5000 direct HIMRA and on 280° track to OLIVR and hold, continue climb-in-hold to 5000.</p>
-----------	--	---------------	---

D-ATIS 134.85	POTOMAC APP CON 120.45 306.925 (241°-330°) 128.525 306.925 (091°-240°) 126.1 338.25 (331°-090°)	DULLES TOWER 120.1 317.8 (Rwy 1R/19L) 120.25 348.6 (Rwy 1C/19C) 134.425 348.6 (Rwy 1L/19R and 12/30)	GND CON 121.9 317.8 (EAST) 121.625 348.6 (WEST)
-------------------------	---	--	---



CATEGORY	A	B	C	D
LPV DA		478/18	200 (200-½)	
LNAV/VNAV DA		714/50	436 (500-1)	
LNAV MDA	720/24	442 (500-½)	720/40 442 (500-¾)	720/50 442 (500-1)
CIRCLING	940-1	627 (700-1)	940-1¾ 627 (700-1¾)	1060-2½ 747 (800-2½)



NE-3, 15 JUL 2021 to 12 AUG 2021

NE-3, 15 JUL 2021 to 12 AUG 2021