

WAAS CH 99309 W01D	APP CRS 011°	Rwy Idg TDZE 296 Apt Elev 313
--	------------------------	---

RNAV (GPS) RWY 1L

WASHINGTON DULLES INTL (IAD)

RNP APCH.

▼ For uncompensated Baro-VNAV systems, LNAV/VNAV NA below -15°C or above 48°C. Simultaneous approach authorized with ILS or LOC Rwy 1R, ILS Rwy 1R (Cat II), ILS Rwy 1R (Cat III). LNAV procedure NA during simultaneous operations. Use of FD or AP providing RNAV track guidance required during simultaneous operations.

ALSF-2



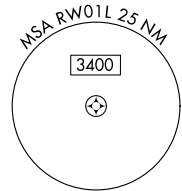
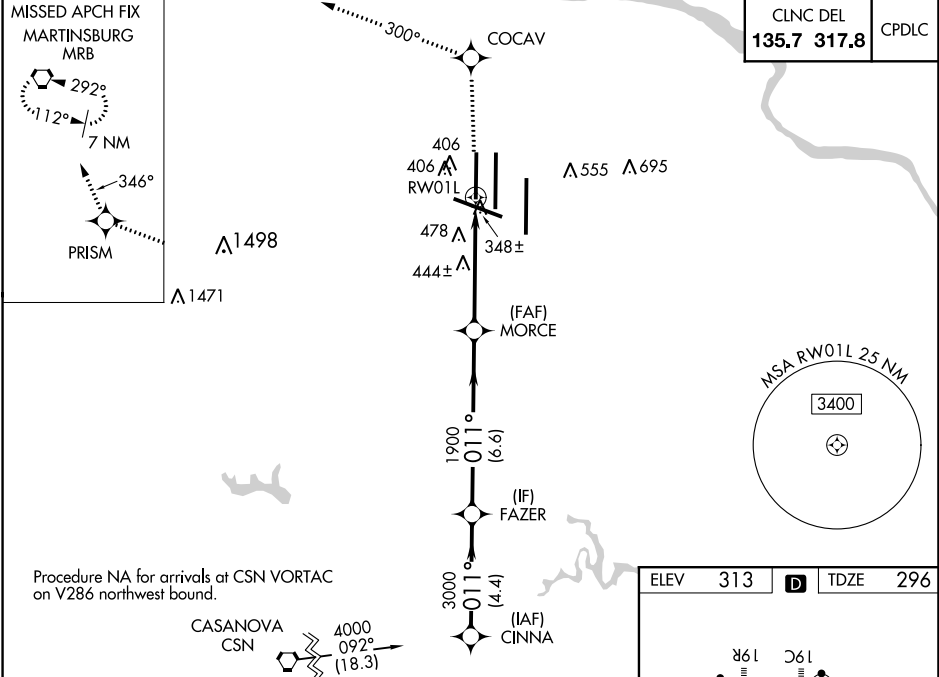
MISSED APPROACH: Climb to 4000 direct COCAV and on 300° track to PRISM and on 346° track to MRB VORTAC and hold.

D-ATIS 134.85	POTOMAC APP CON 120.45 306.925 (241°-330°) 128.525 306.925 (091°-240°) 126.1 338.25 (331°-090°)	DULLES TOWER 120.1 317.8 (Rwy 1R/19L) 120.25 348.6 (Rwy 1C/19C) 134.425 348.6 (Rwys 1L/19R and 12/30)	GND CON 121.9 317.8 (EAST) 121.625 348.6 (WEST)
-------------------------	---	---	---

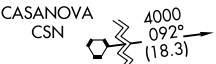
MISSED APCH FIX
MARTINSBURG
MRB



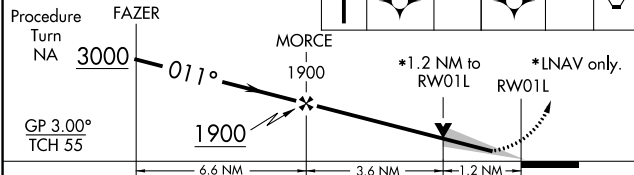
CLNC DEL 135.7 317.8	CPDLC
--------------------------------	-------



Procedure NA for arrivals at CSN VORTAC on V286 northwest bound.



VGSI and RNAV glidepath not coincident (VGSI Angle 3.00°/TCH 72).



CATEGORY	A	B	C	D
LPV DA		496/18	200 (200-½)	
LNAV/VNAV DA		828/60	532 (600-1¼)	
LNAV MDA	740/24	444 (500-½)	740/40 444 (500-1)	740/50 444 (500-1)
CIRCLING	940-1	627 (700-1)	940-1¾ 627 (700-1¾)	1060-2½ 747 (800-2½)

ELEV 313	D	TDZE 296
----------	---	----------

